

CLASSICAL GREECE

480 ~ 323 BC "

HIGH CLASSICAL: 450~400 BC "

LATE CLASSICAL: 400 ~ 323 BC

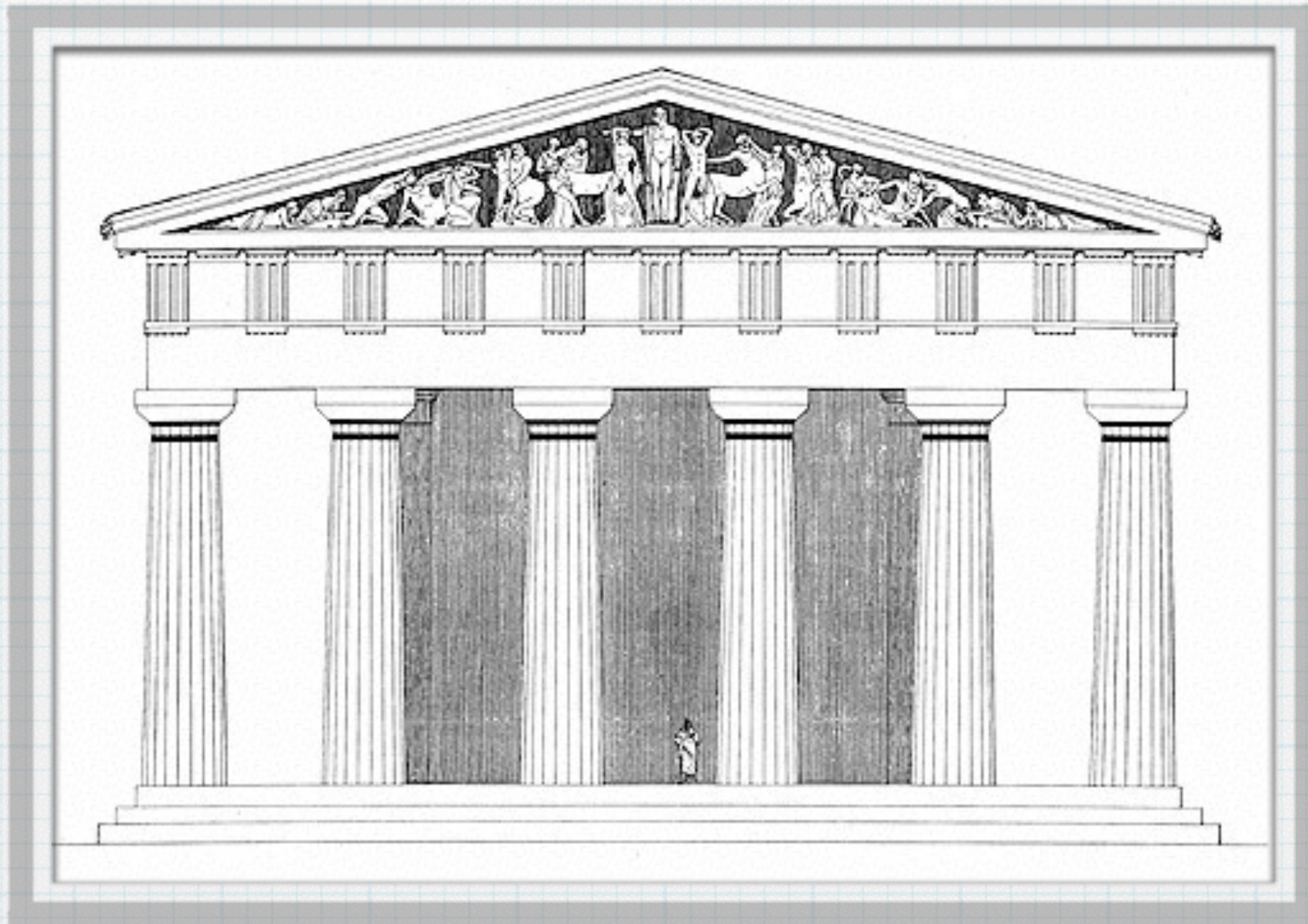
GENERALIZATIONS ABOUT CLASSICAL GREEK ART

- ◉ INSPIRATION FROM NATURE NOT IMAGINATION "
- ◉ NATURALISM, ESPECIALLY IN THE HUMAN FORM "
- ◉ SCULPTED AND PAINTED FROM LIVE SUBJECTS "
- ◉ LITTLE OR NO EMOTION SHOWN "
- ◉ LATE CLASSICAL: "
- ◉ FEMALE NUDES "
- ◉ ART BECOMES MORE SECULAR "
- ◉ MORE VIEWER INVOLVEMENT

UNLIKE THE GODS OF
MESOPOTAMIA & EGYPT,
THE GODS OF CLASSICAL GREECE
TOOK HUMAN FORM.

TEMPLE OF ZEUS

AT OLYMPIA

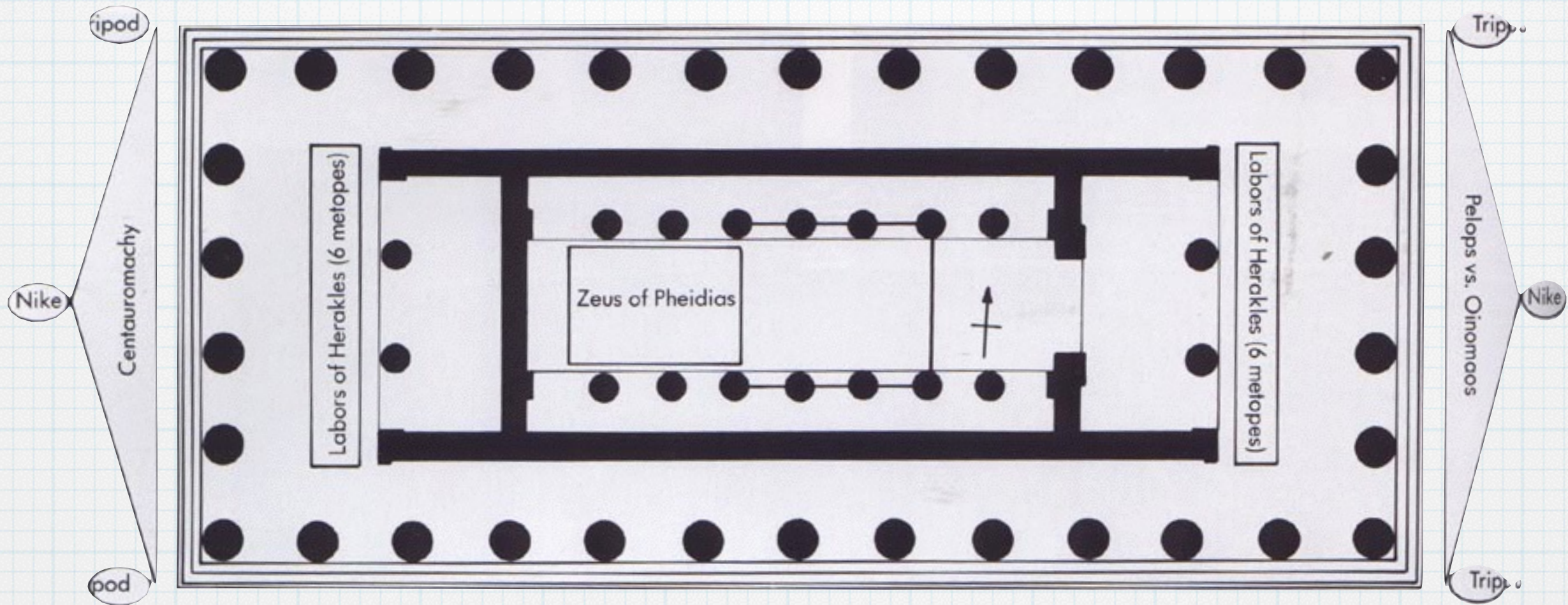


THE TEMPLE WAS DESTROYED
BY EARTHQUAKE.

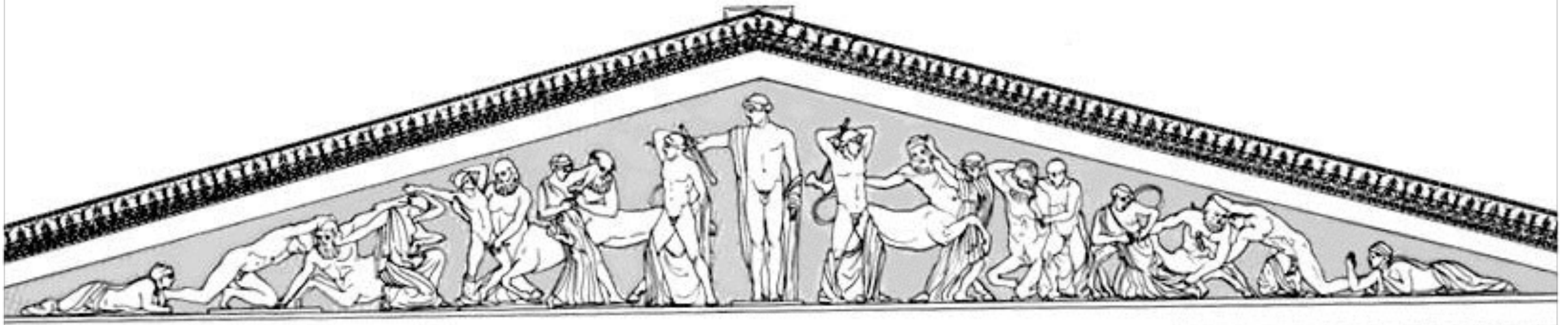
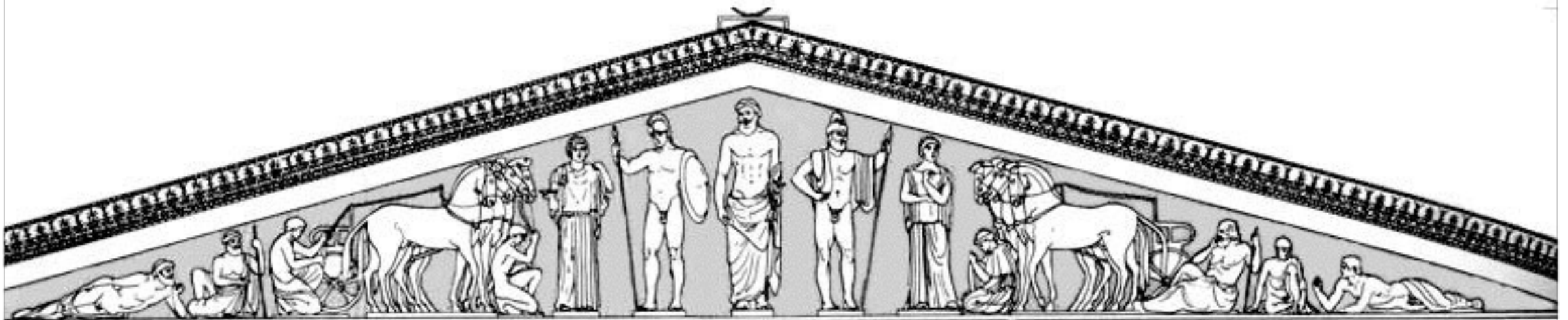


NOTICE HOW
COLUMNS WERE BUILT
IN SECTIONS.





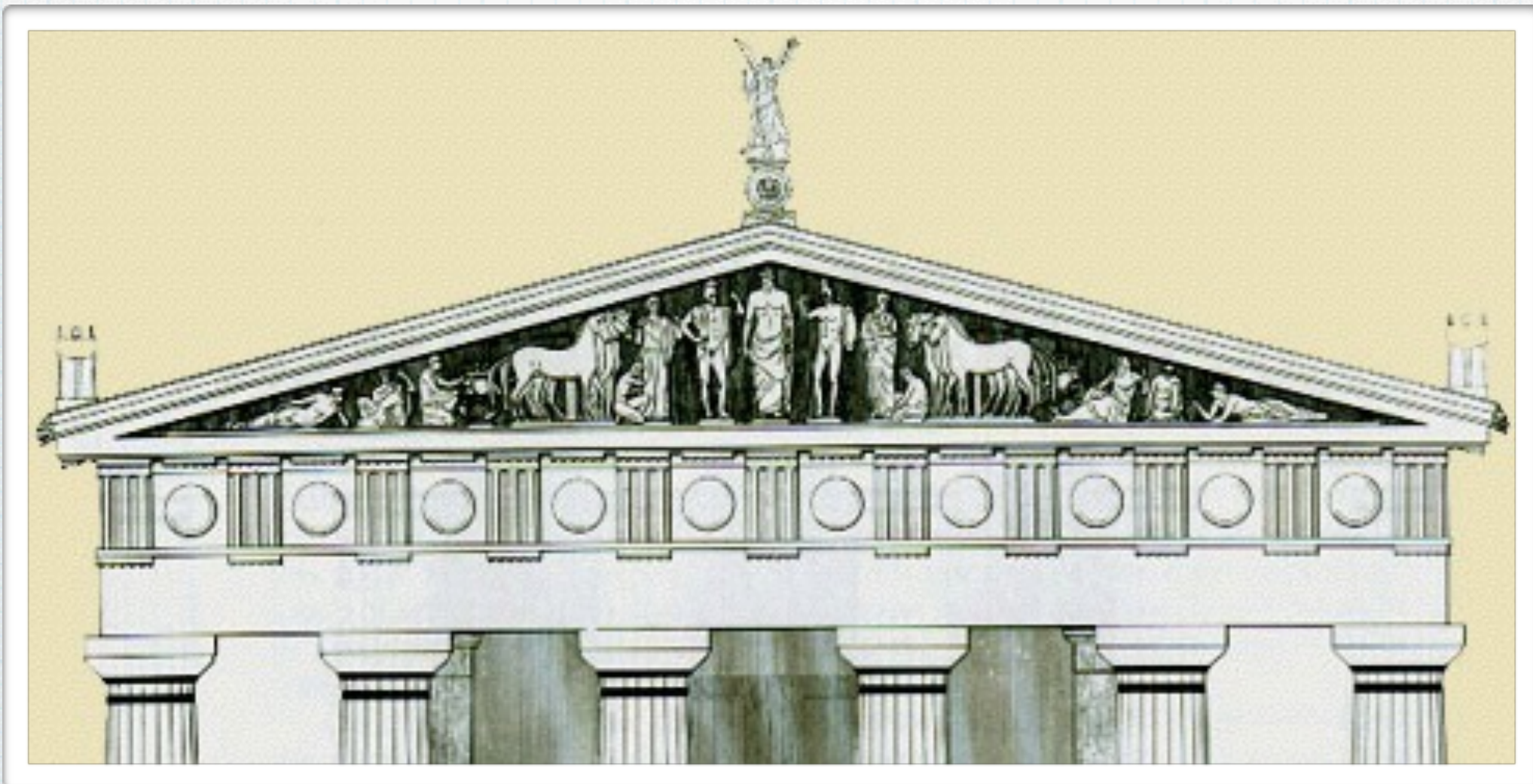
PELOPS VS. OENOMAUUS

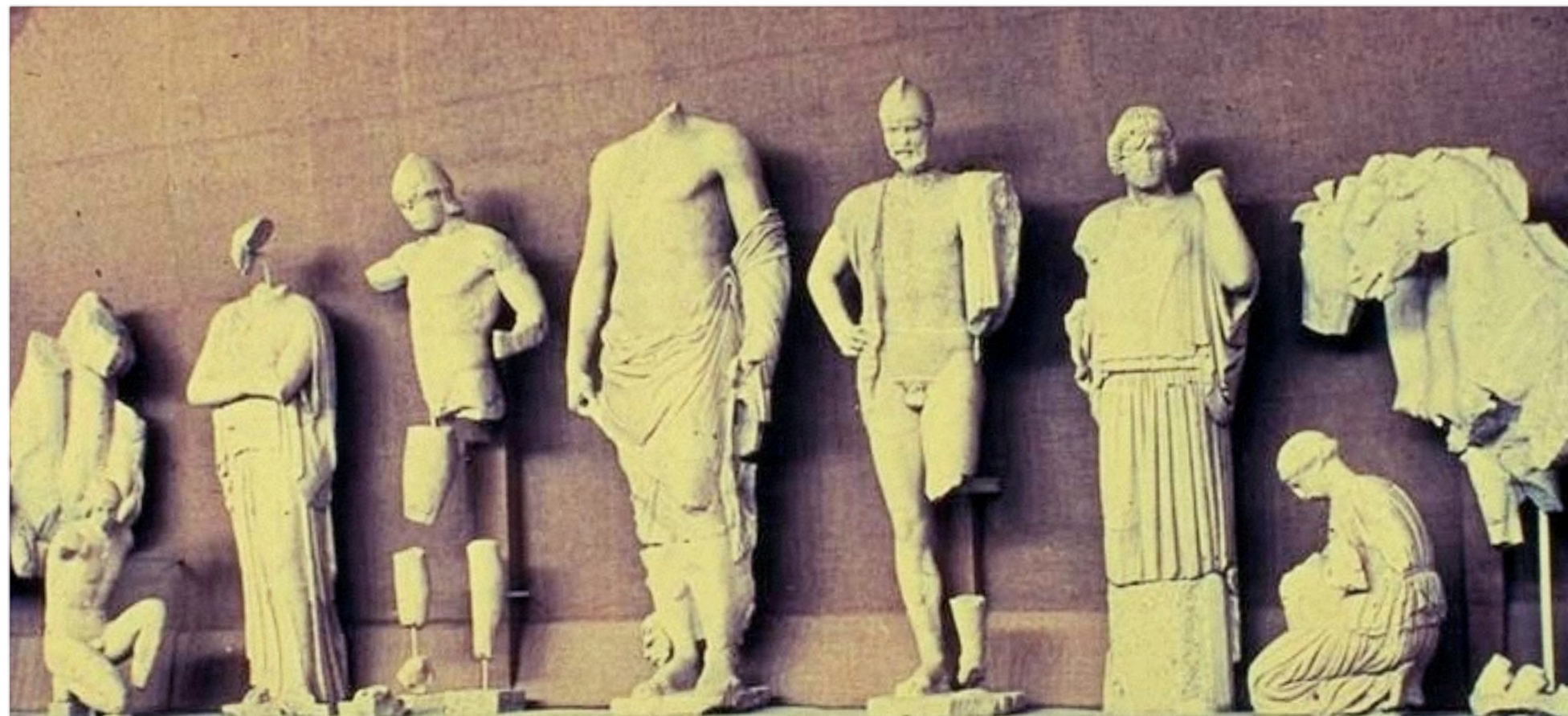


CENTAUROMACHY

EAST PEDIMENT

PELOPS VS. OENOMAVUS



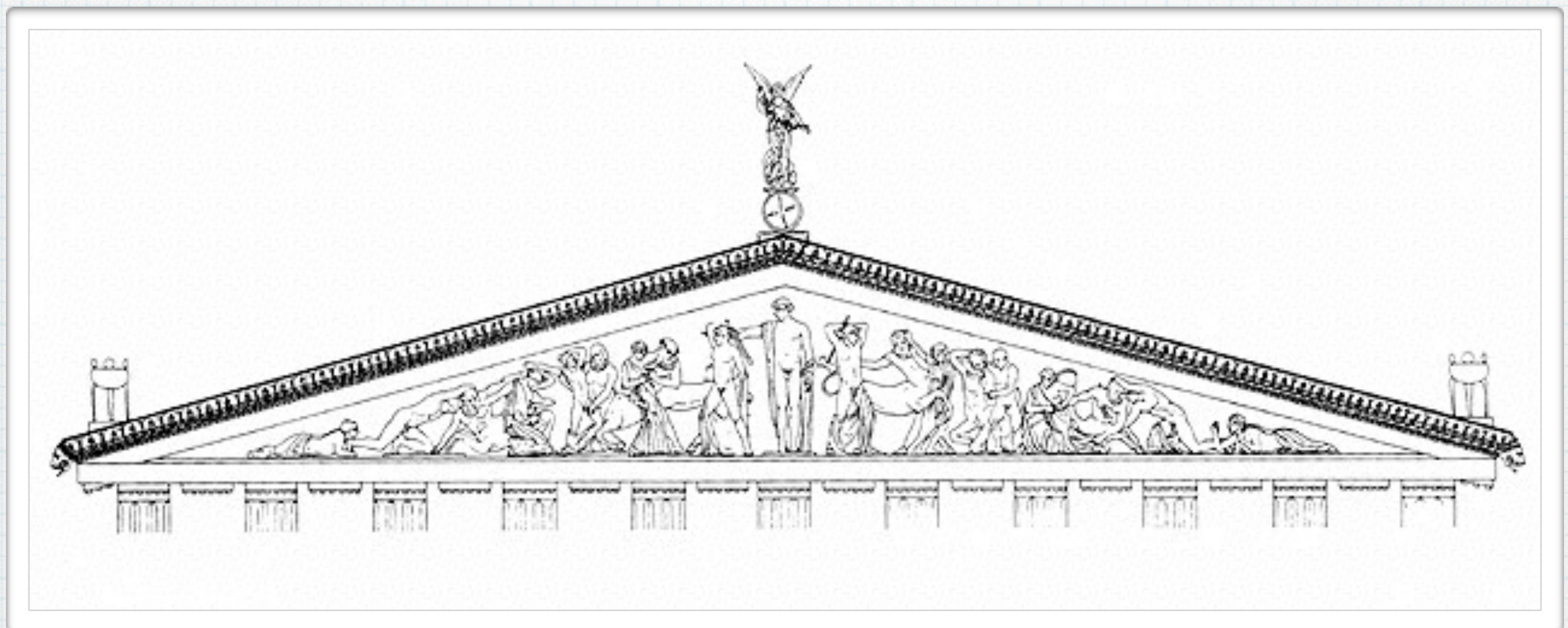






Patrick Beazom 2001

WEST PEDIMENT



CENTAUROMACHY







THE INTERIOR METOPE DEPICTED SCENES FROM THE TWELVE LABORS OF HERAKLES

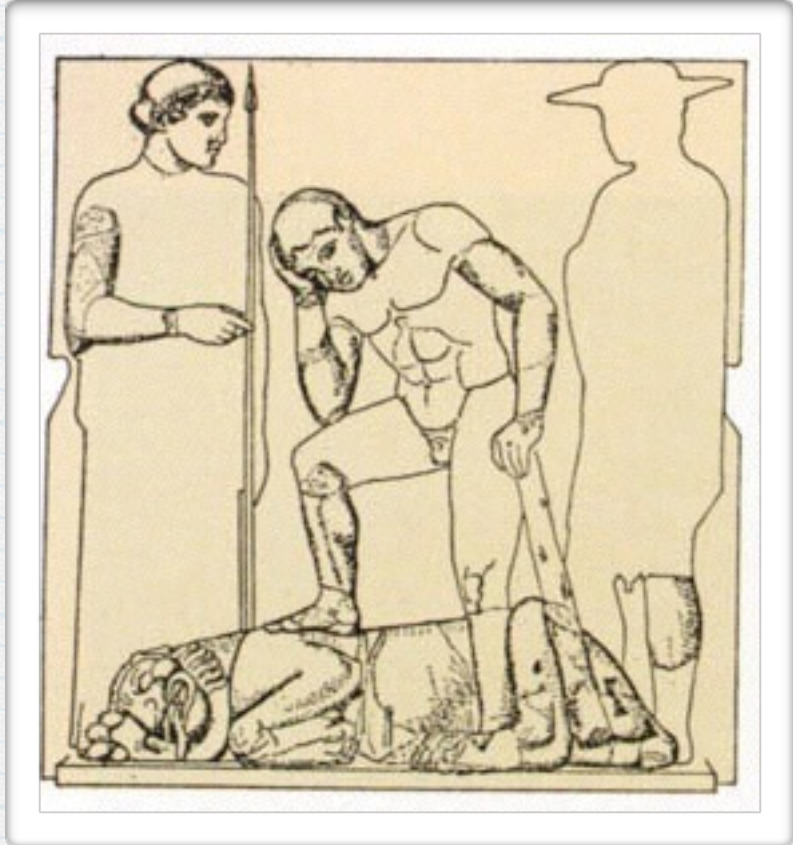


LABORS OF HERAKLES

- SLAY THE NEMEAN LION "
- SLAY THE LERNAEAN HYDRA "
- CAPTURE THE CERYNEIAN HIND "
- CAPTURE THE ERYMANTHIAN BOAR "
- CLEAN THE AUGEAN STABLES IN ONE DAY "
- SLAY THE STYMPHALION BIRDS "
- CAPTURE THE CRETAN BULL "
- STEAL THE MARES OF DIOMEDES "
- OBTAIN THE GIRDLE OF HIPPOLYTE "
- OBTAIN THE CATTLE OF GERYON "
- STEAL THE APPLES OF HESPERIDES "
- CAPTURE CERBERUS, GUARDIAN OF HADES







KRITIOS YOUTH





Kouros of Melos

Kouros of Tenea

Kouros of Anavyssos

Piraeus Apollo

Kouros for Aristodikos

Kritian Boy



570-560



550



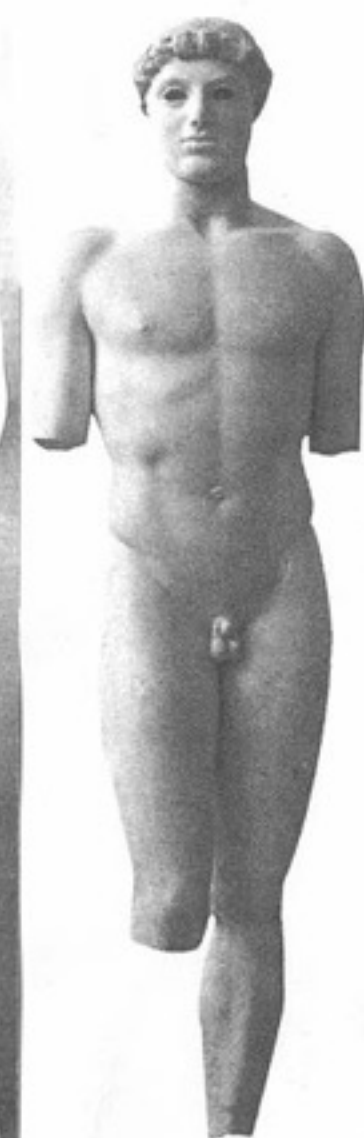
540-530



530-520



510-500

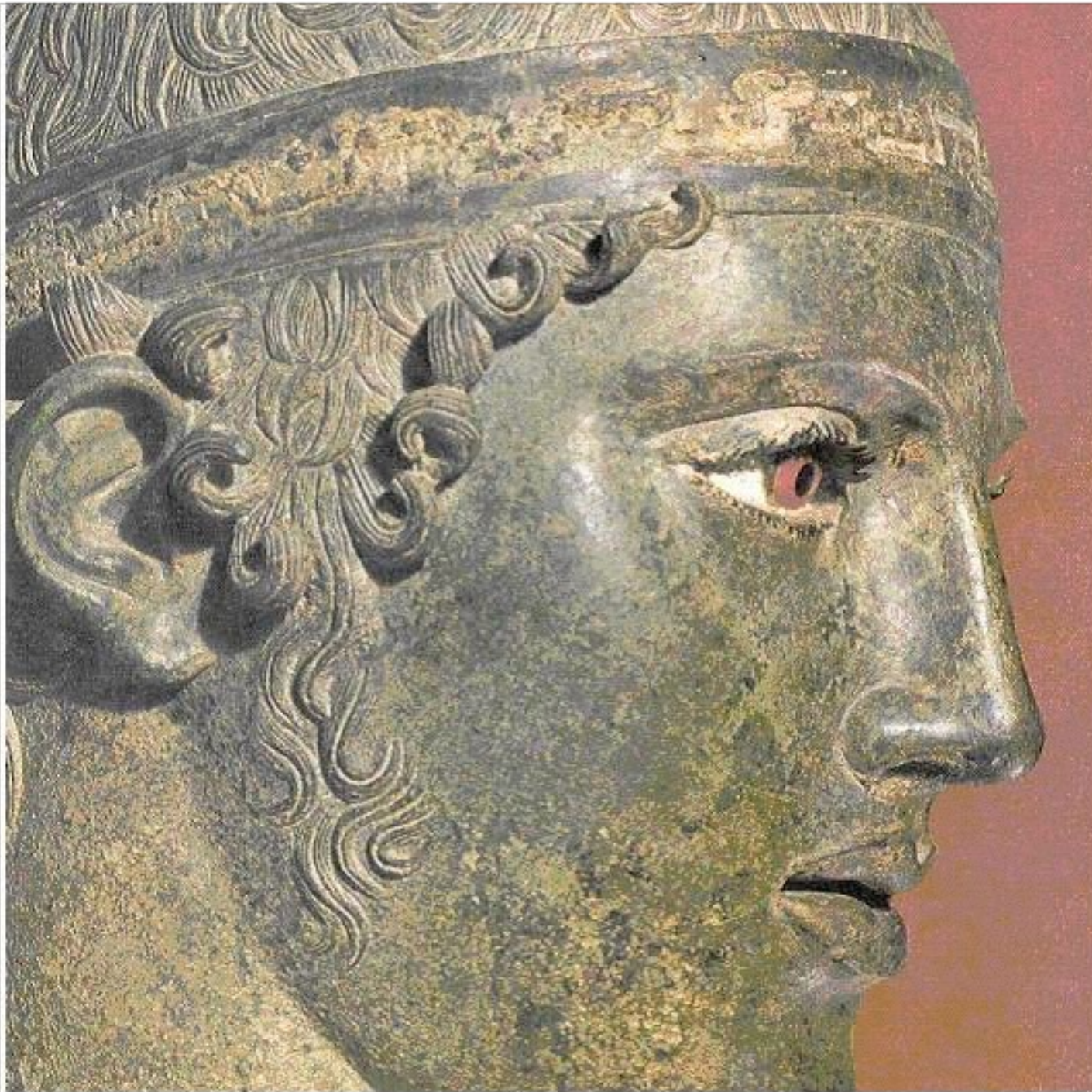


500-480

CHARIOTEER FROM DELPHI



WHAT PART
OF A RACE IS THIS
STATUE
DEPICTING?



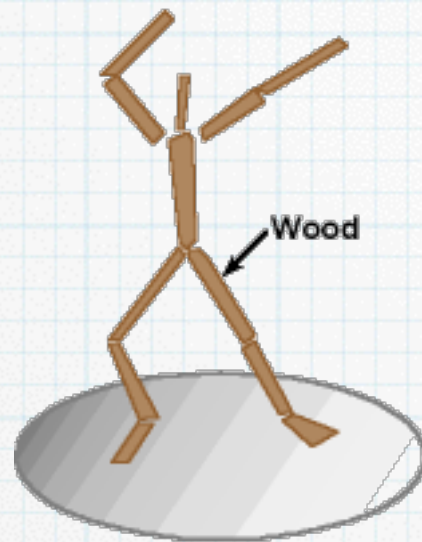
EYES: BONE AND GLASS PASTE "

EYE LASHES: BRONZE "

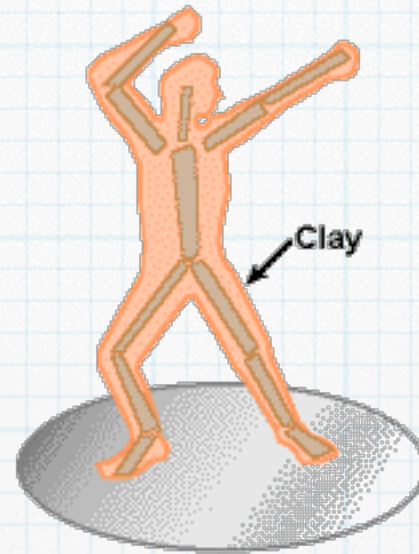
CURLS: CAST INDIVIDUALLY AND
ATTACHED TO HEAD

GREEK HOLLOW BRONZE SCULPTURE

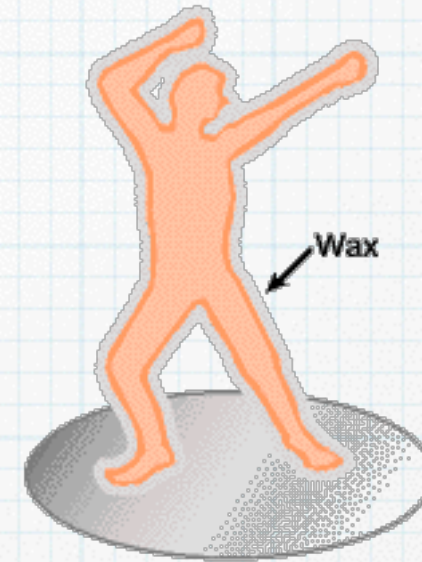
LOST WAX CASTING



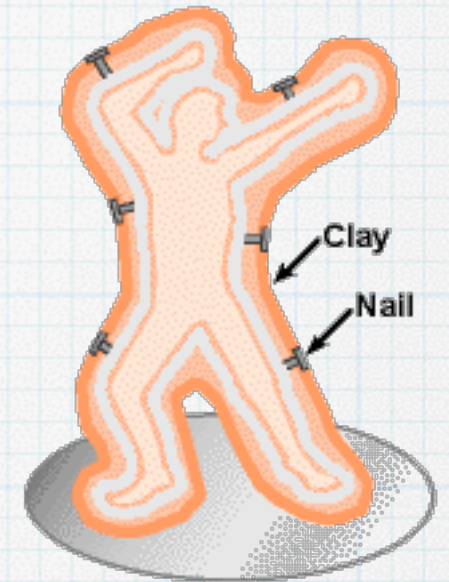
1. Armature assembly



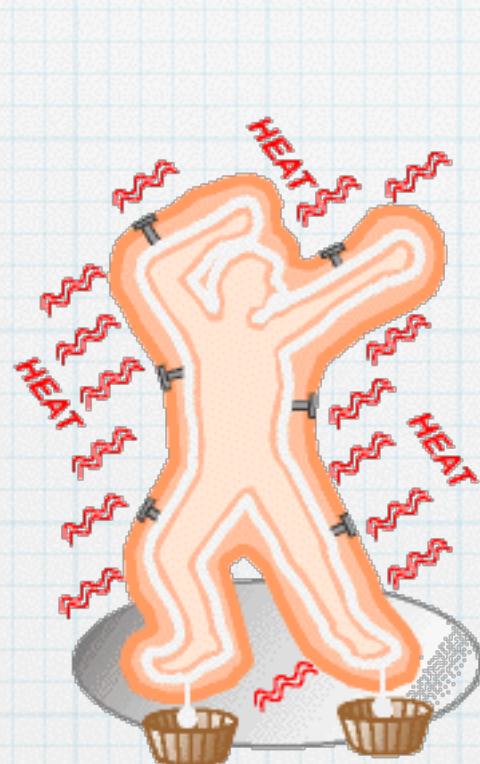
2. Complete Model



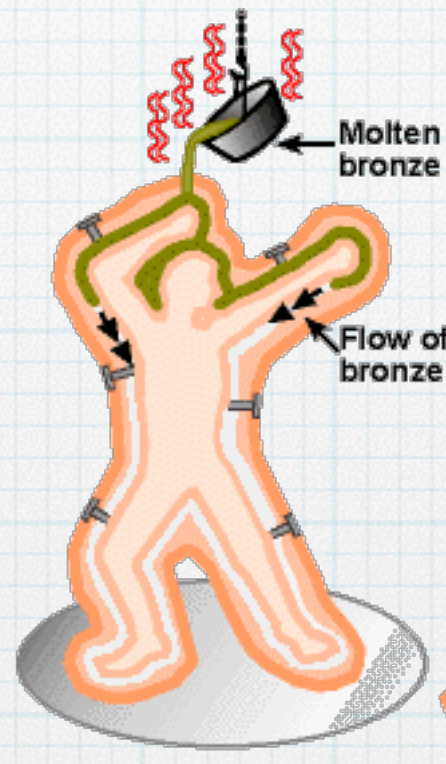
3. Wax layer on model



4. Complete mold with nails



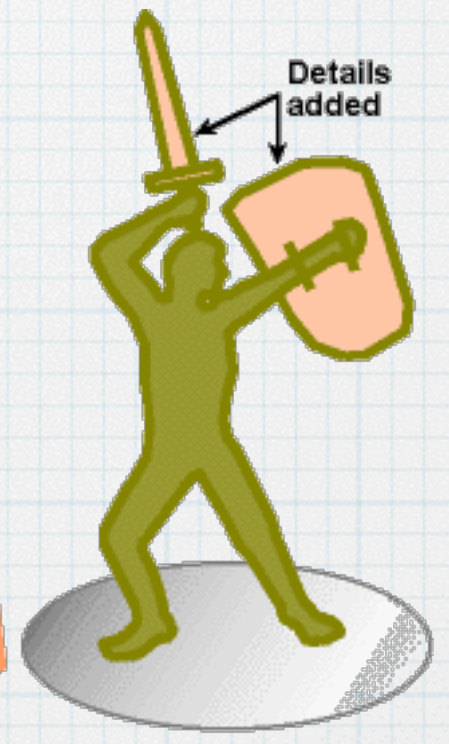
5. Heating of mold; draining of wax



6. Addition of molten bronze

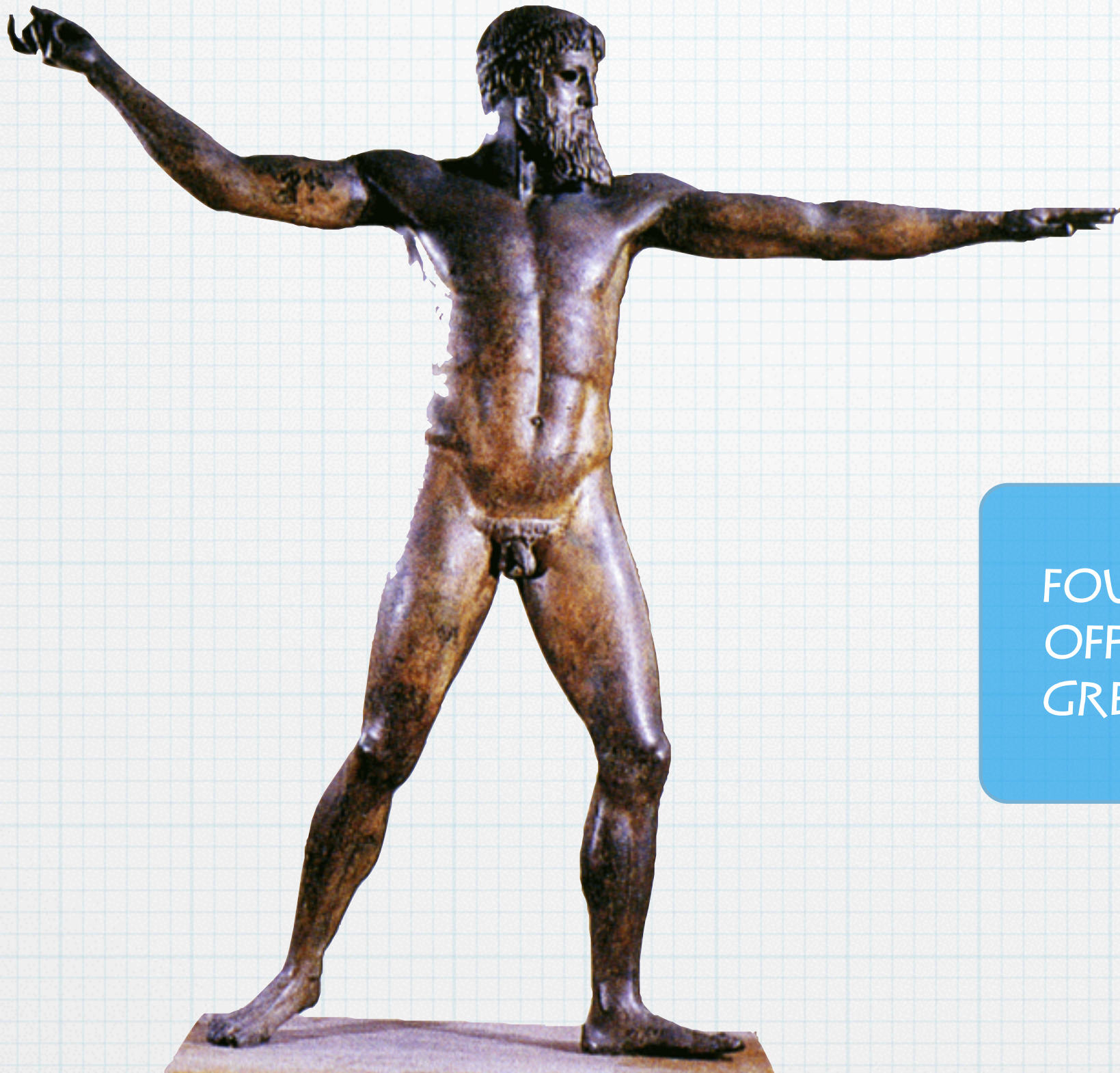


7. Removal of mold



8. Complete hollow cast-bronze sculpture

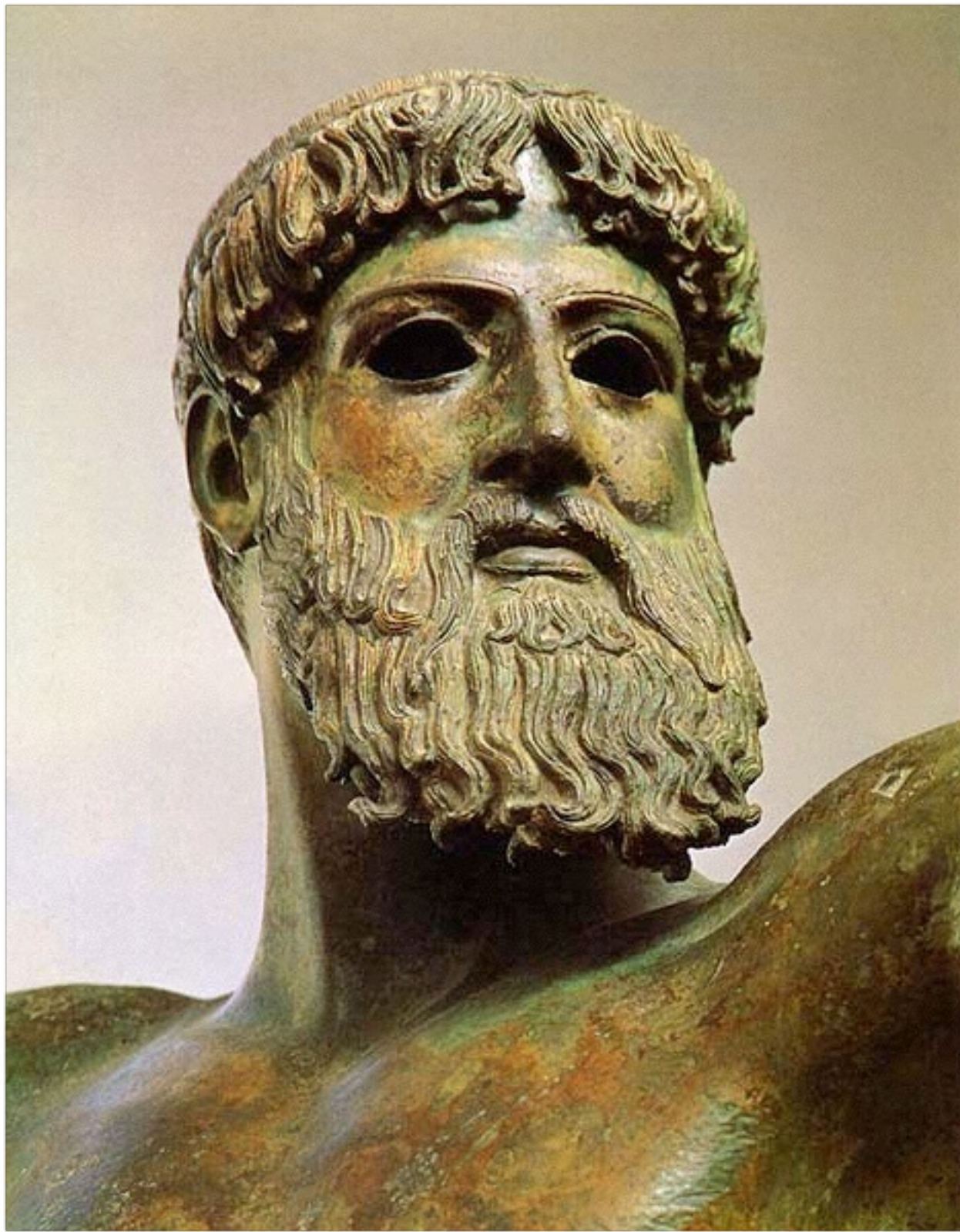
ARTEMISIUM ZEUS



FOUND IN THE SEA
OFF THE COAST OF
GREEK MAINLAND



ZEVS OR POSEIDON?



HOLLOW BRONZE
CASTING ALLOWED
FOR MORE DYNAMIC
POSES.

RIACE WARRIORS



DISCOVERED BY SPONGE DIVERS
OFF THE COAST OF ITALY



RIACE
WARRIORS





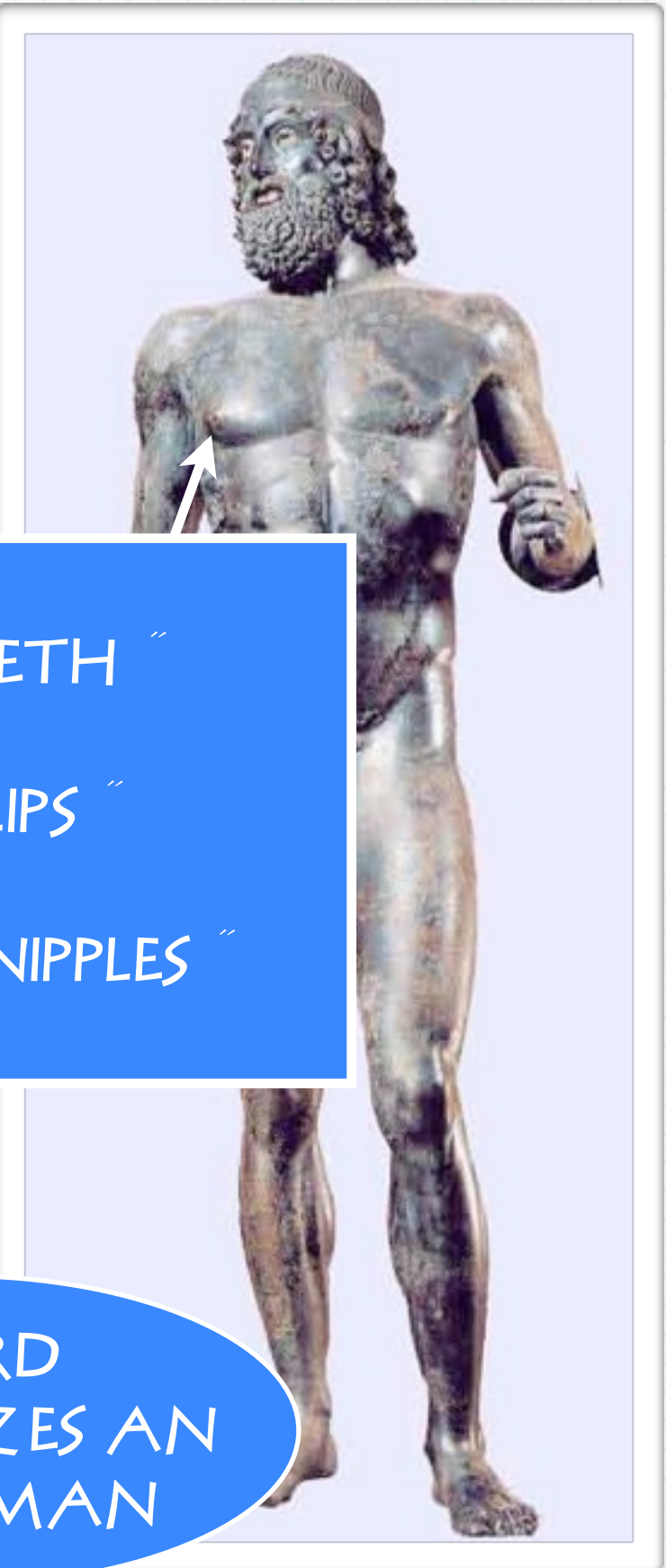


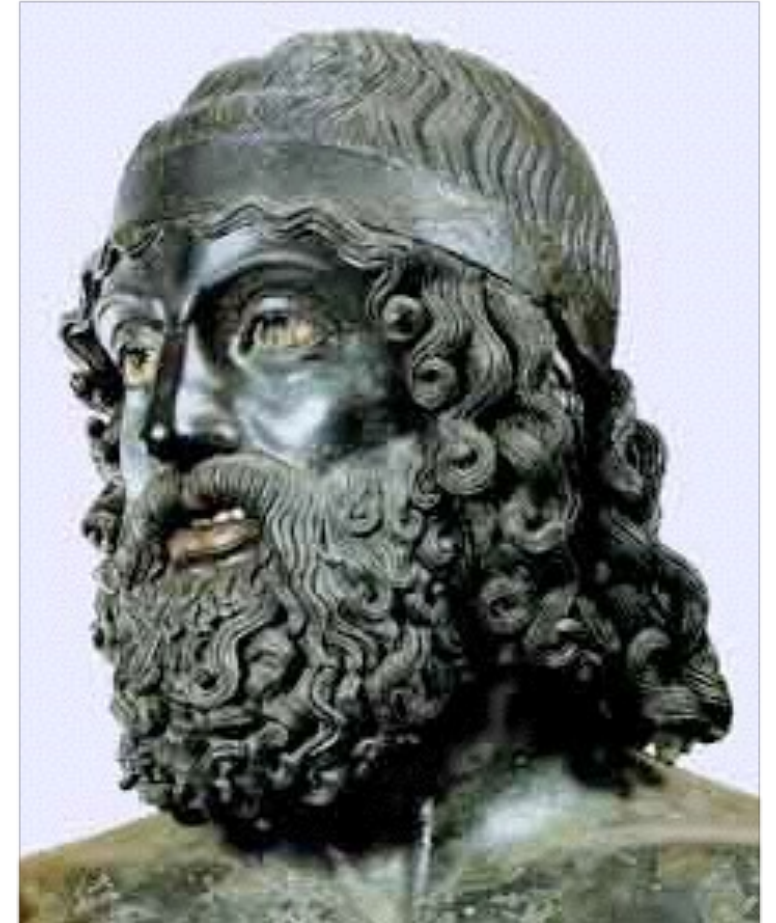
“
● SILVER TEETH ”

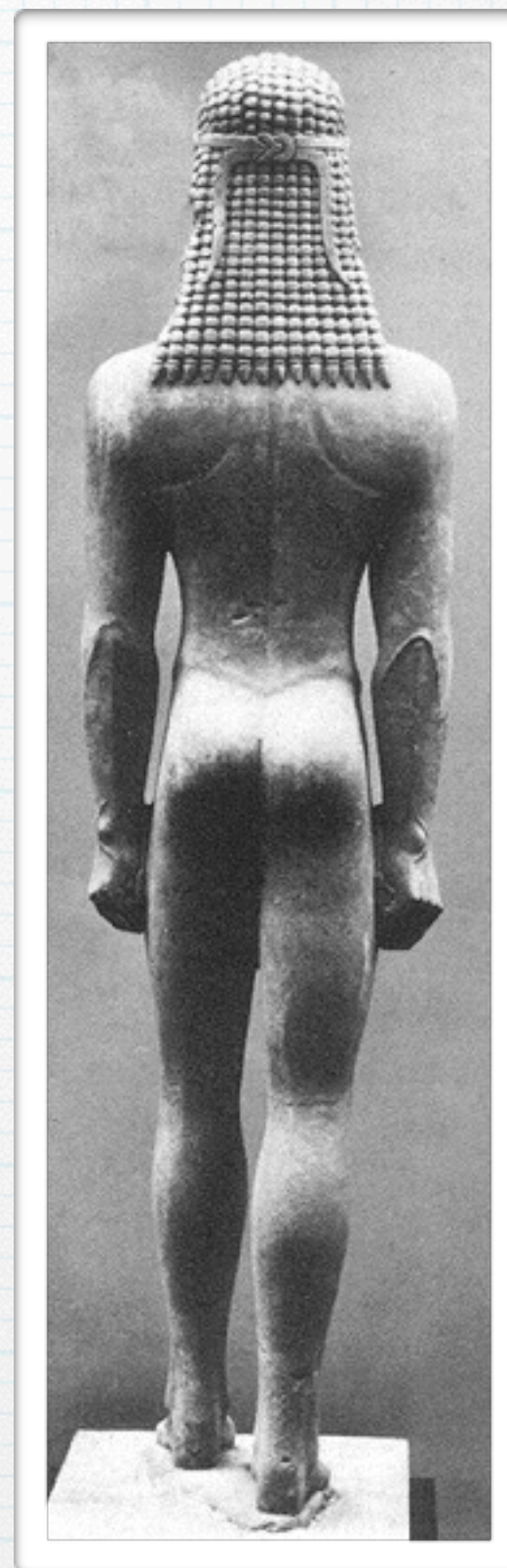
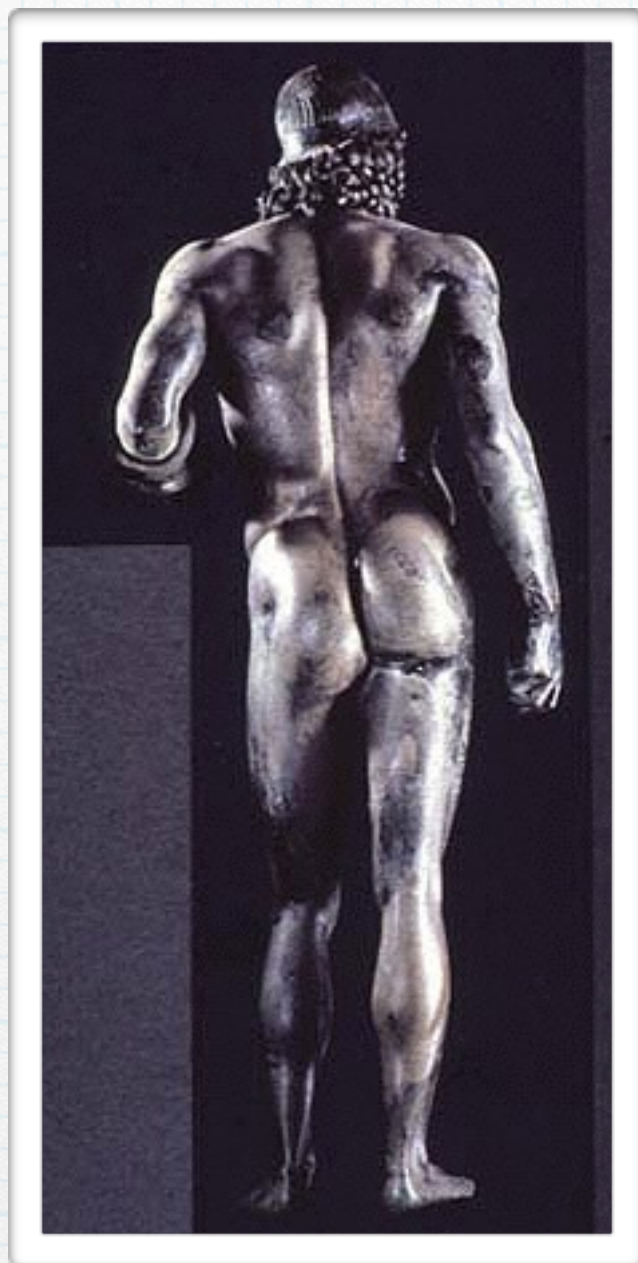
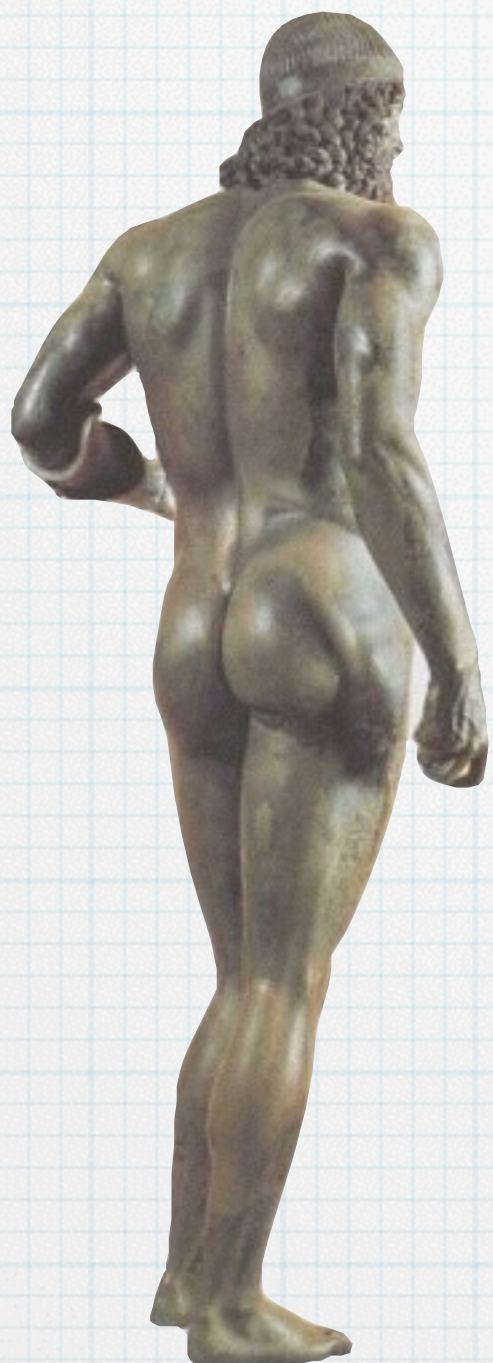
● COPPER LIPS ”

● COPPER NIPPLES ”

BEARD
SYMBOLIZES AN
OLDER MAN







DORY PHOROS THE SPEARBEARER



MARBLE
ROMAN COPY OF A
GREEK BRONZE
SCULPTURE



ASSOCIATED WITH A
TREATISE ON HOW TO
MAKE A PERFECT STATUE
OF A MAN BY
POLYKLEITOS "

GREEK DOCTOR, GALEN,
DESCRIBED IT AS THE BEST
PROPORTIONED IMAGE OF
A MAN.

BALANCED BUT NOT
SYMMETRICAL. "

OPPOSITE LIMBS AT REST
AND AT WORK.



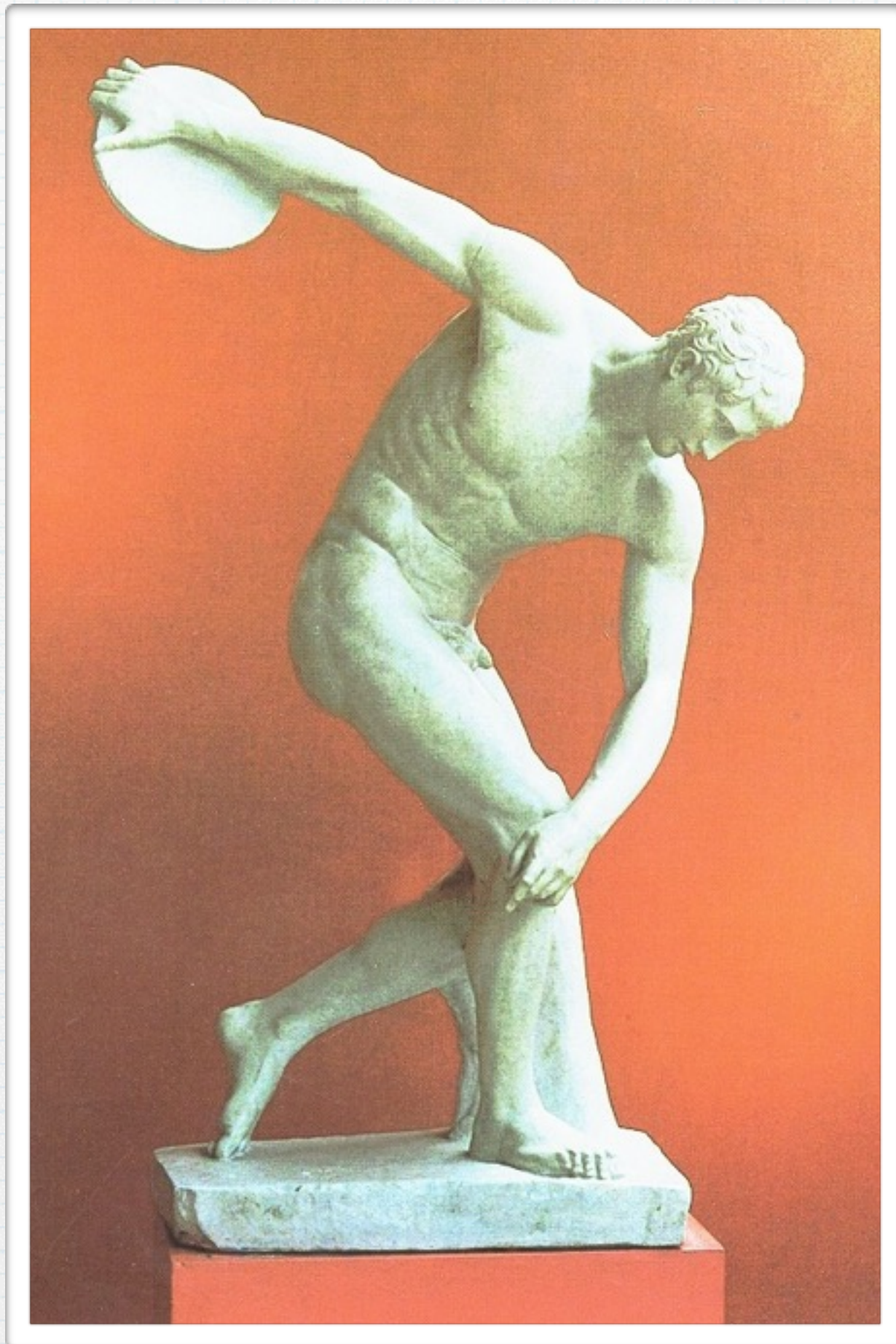
THIS WAS A FAMOUS
WORK IN ANTIQUITY
AND MANY COPIES
WERE MADE.

DISCOBOLOS BY MYRON



ROMAN COPY







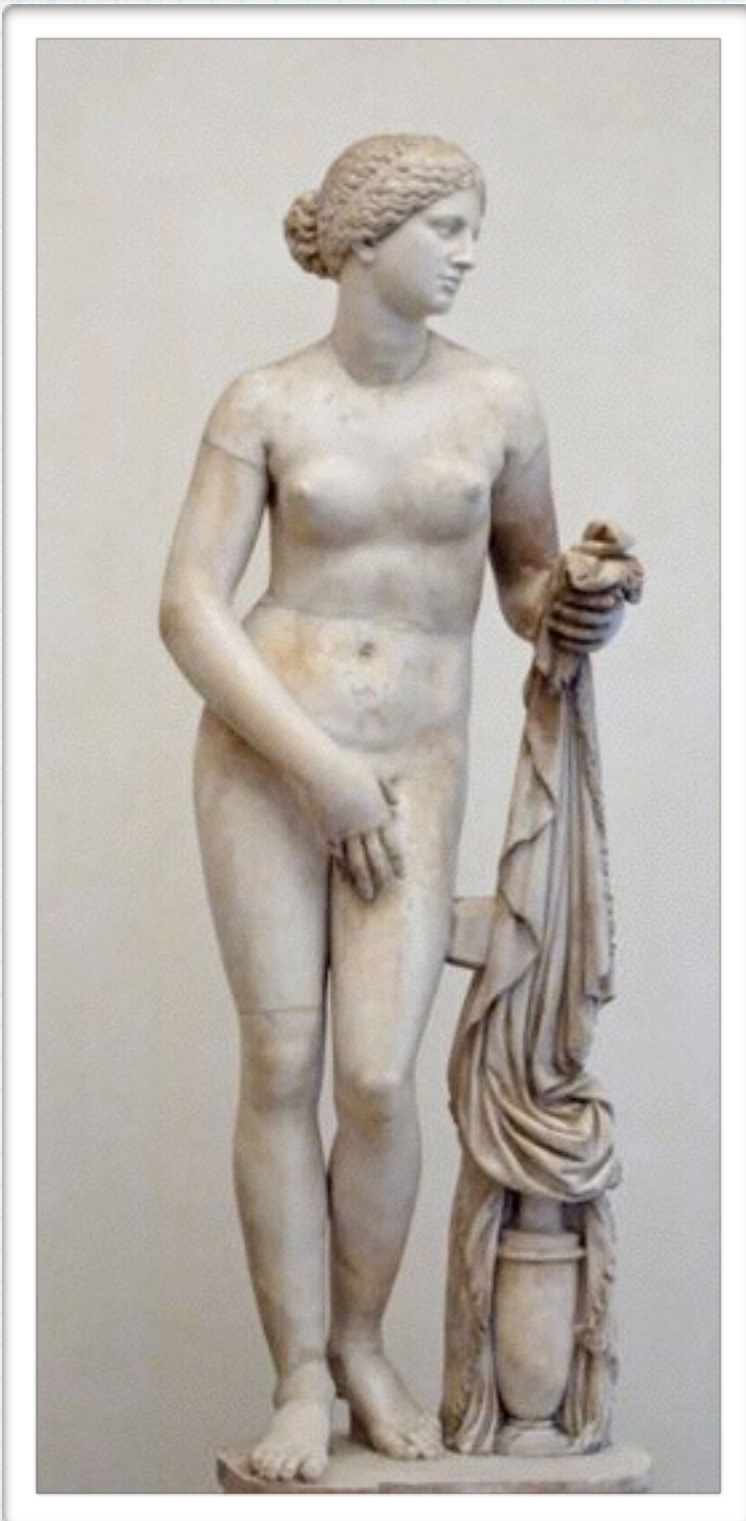
THE FINALISTS

"We have company, Henry. Use the good china."
Jay Shuck, Minneapolis, Minn.

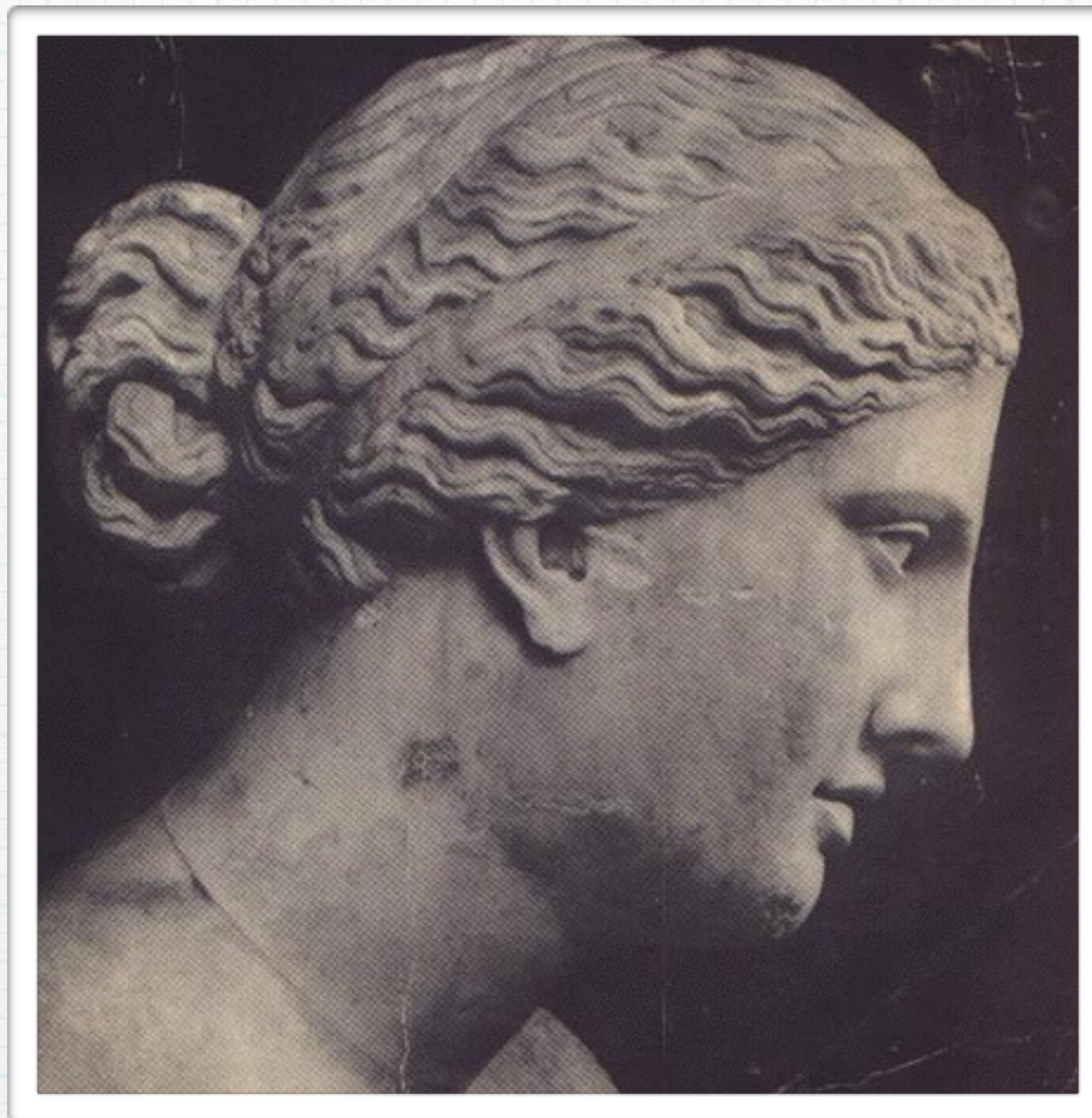
"He has his life, and I have mine."
George Irizary, Forestville, Calif.

"Can you tell it's a knockoff?"
Elizabeth Tillotson, Minneapolis, Minn.

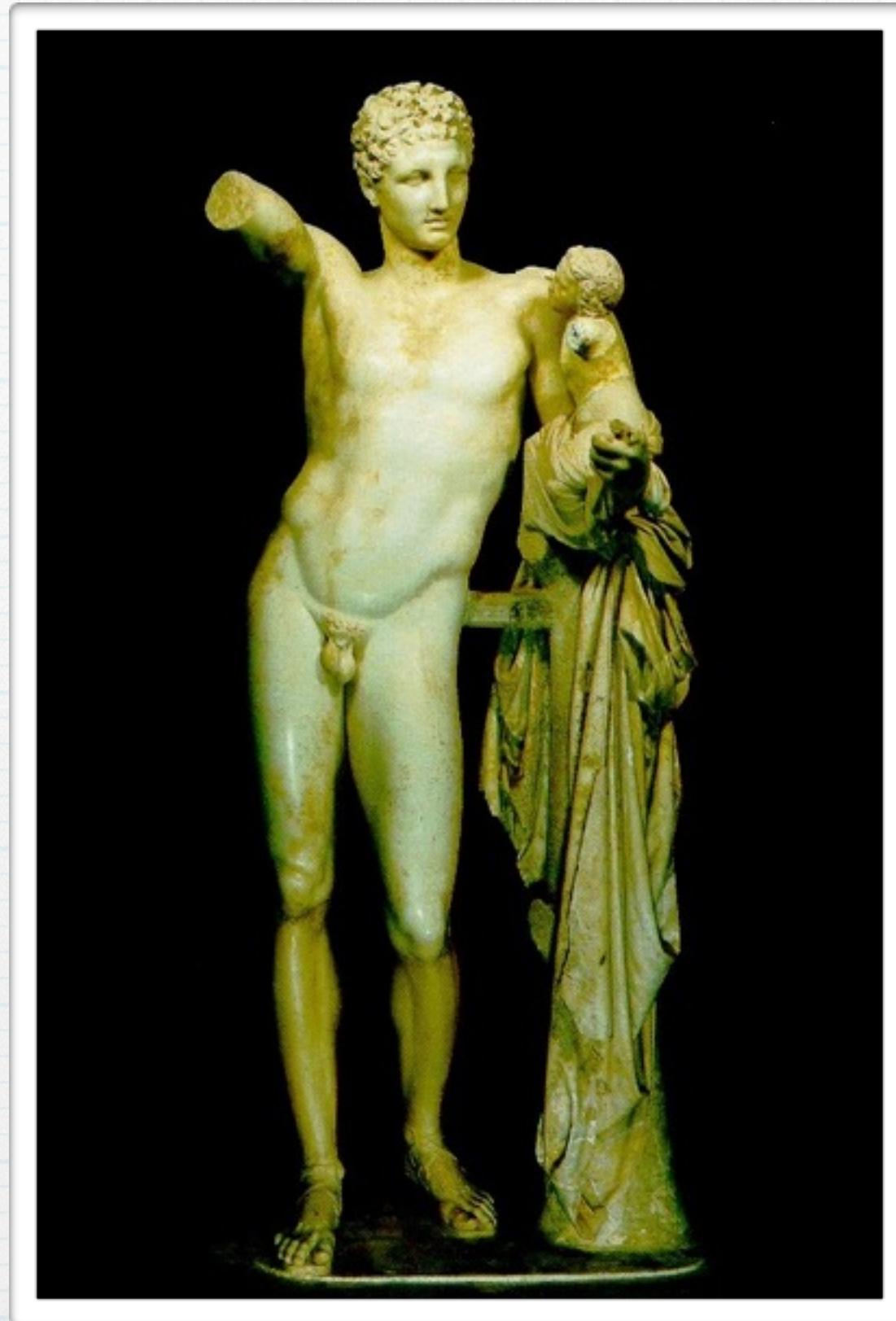
APHRODITE OF KNIDOS



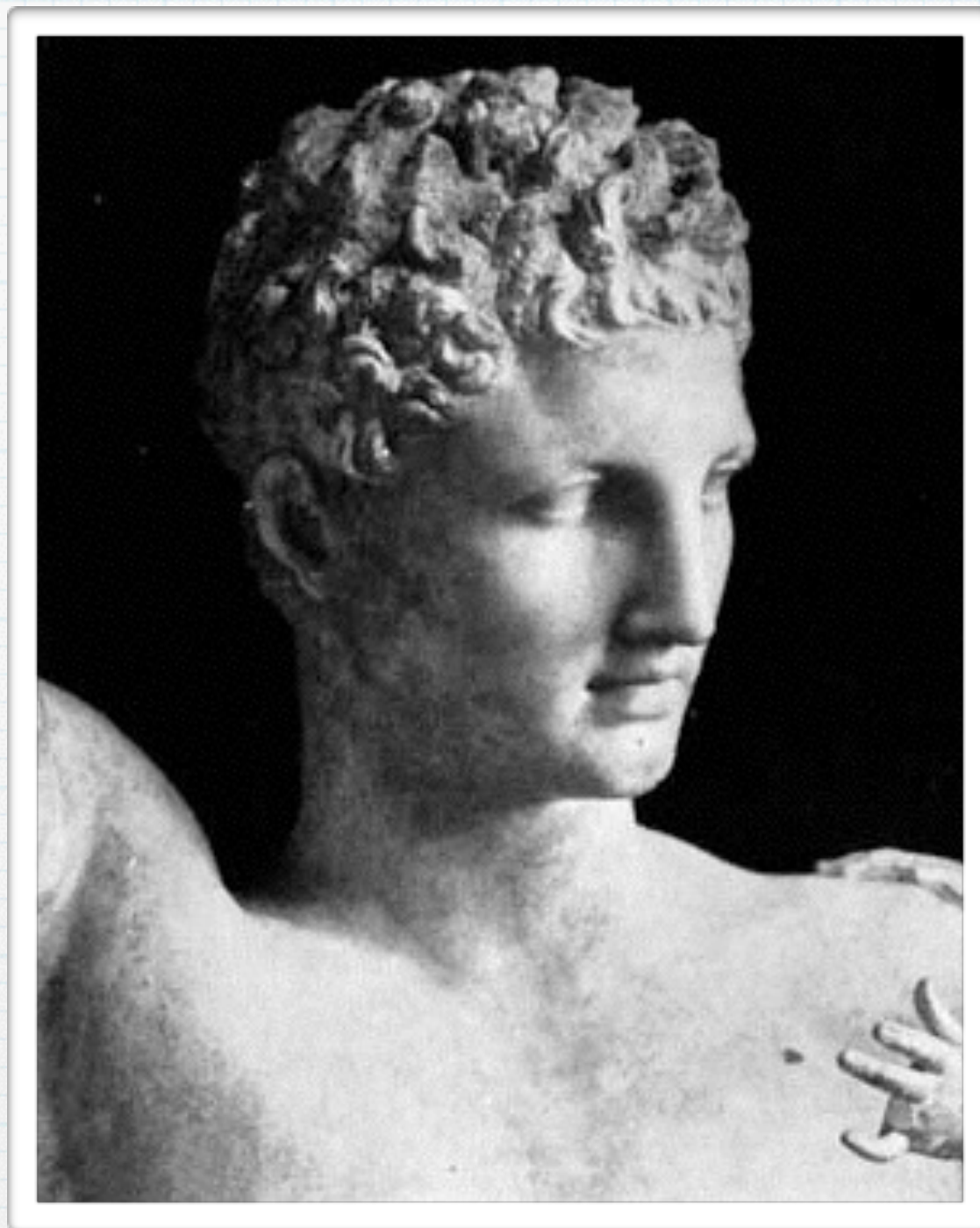
FIRST FEMALE
NUDE IN GREEK ART



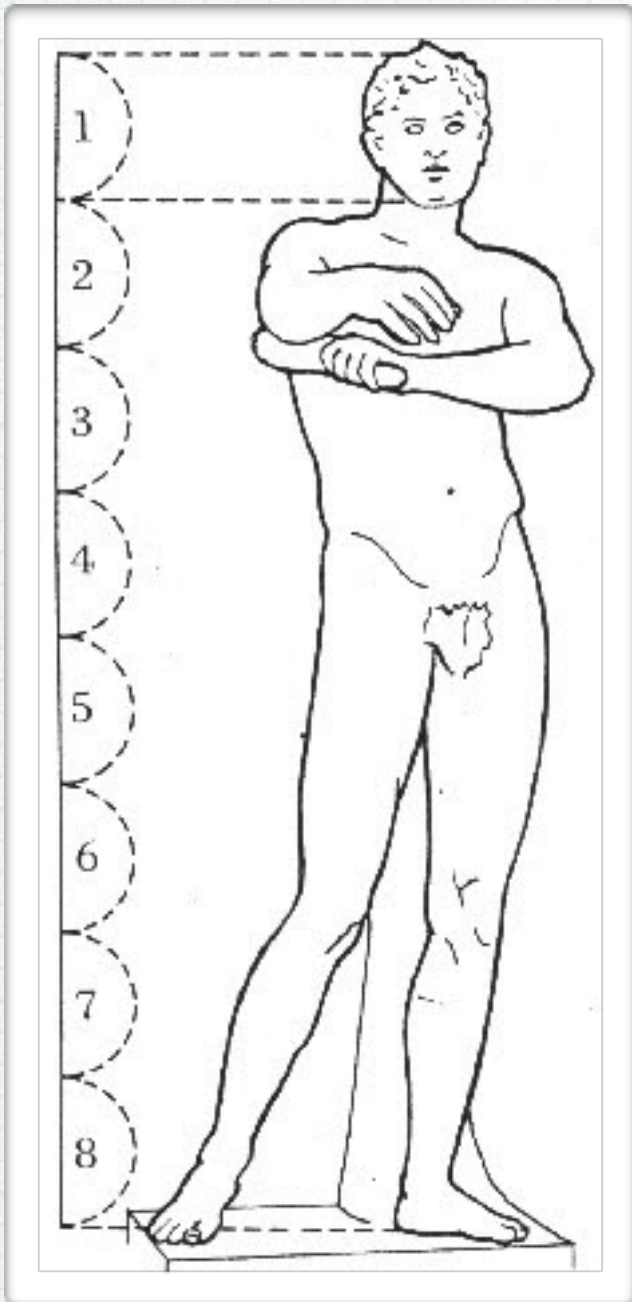
HERMES & DIONYSUS



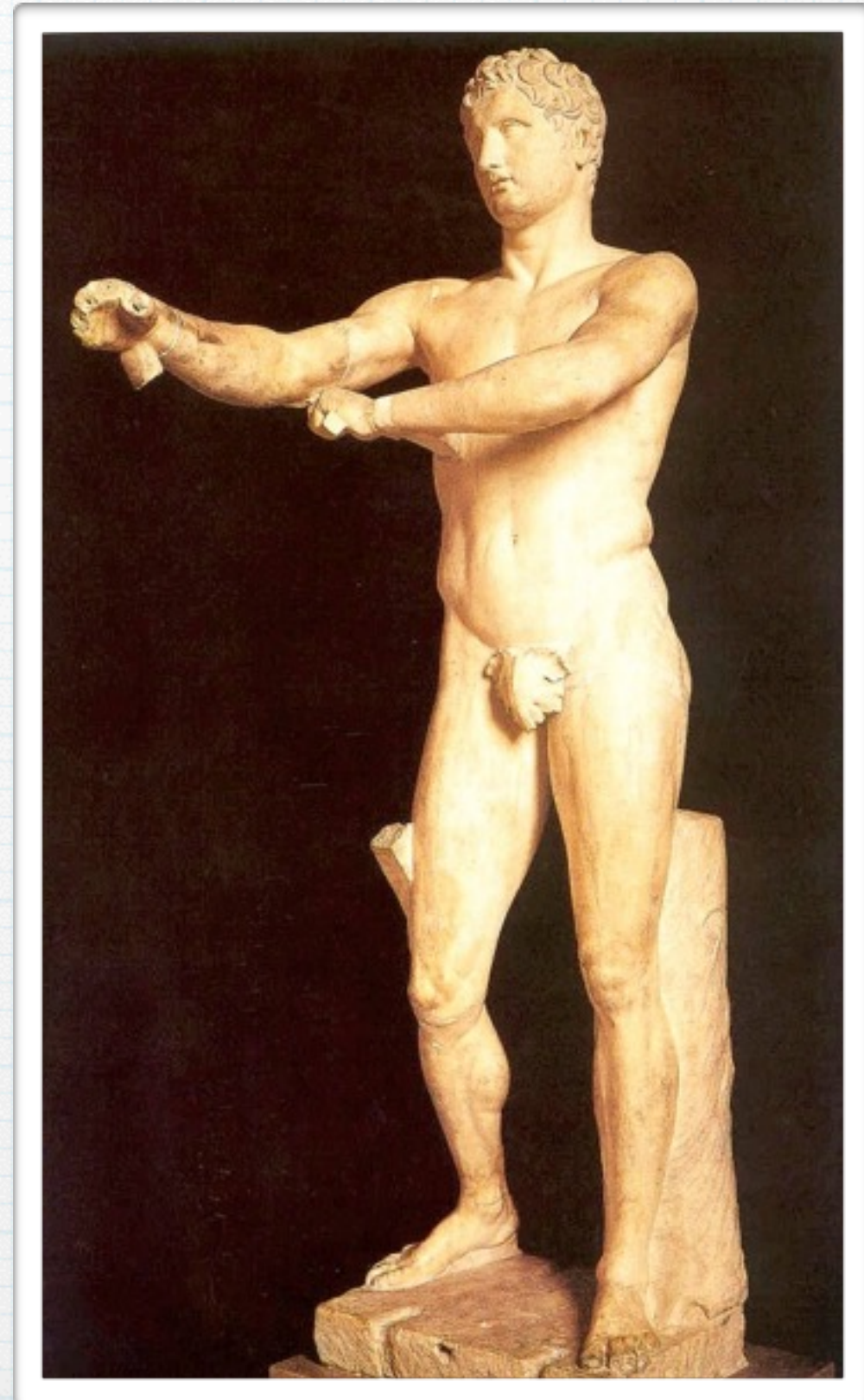




APOXYOMENOS



THE SCRAPER



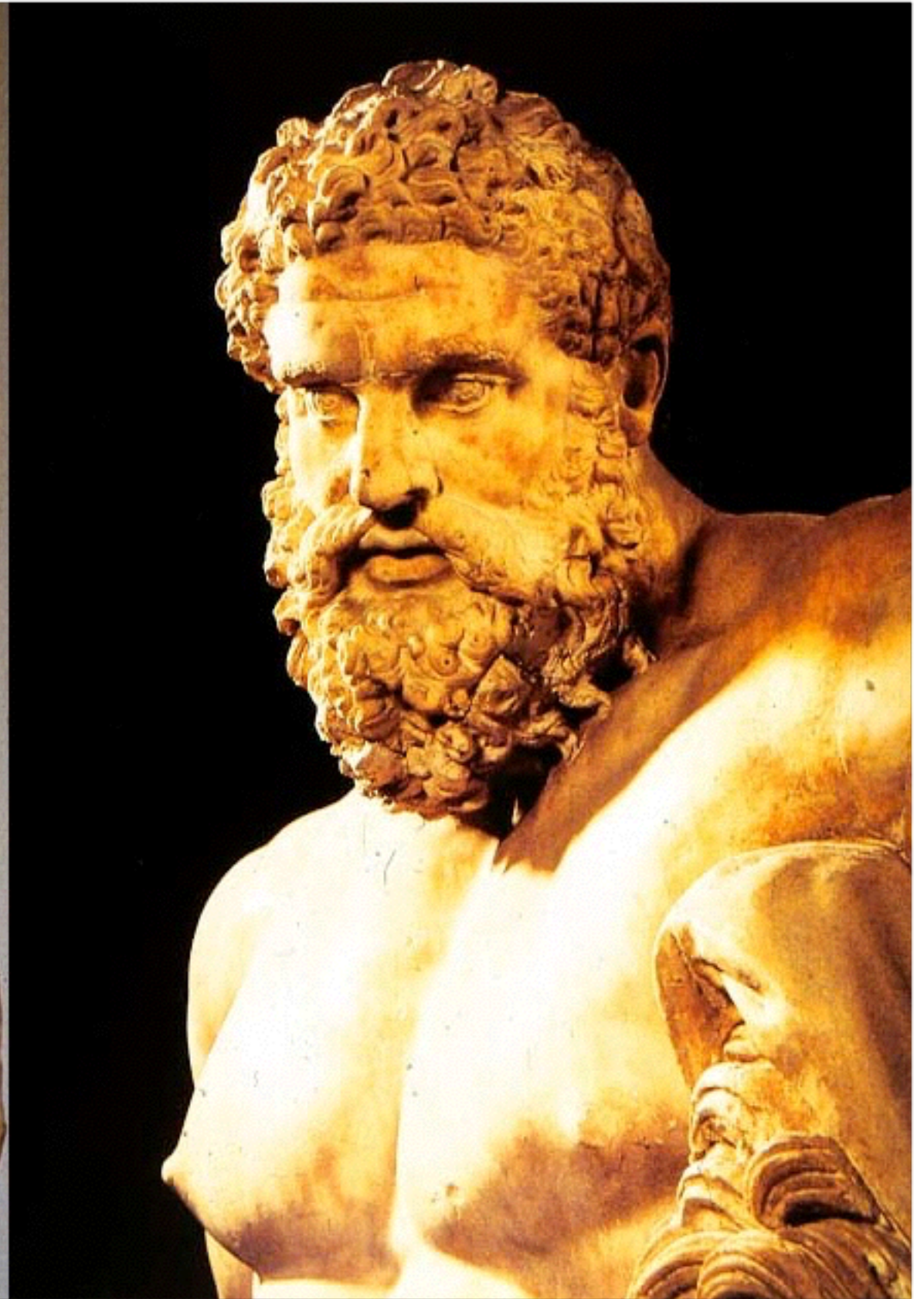
STRIGIL







FARNESE HERAKLES







ACROPOLIS

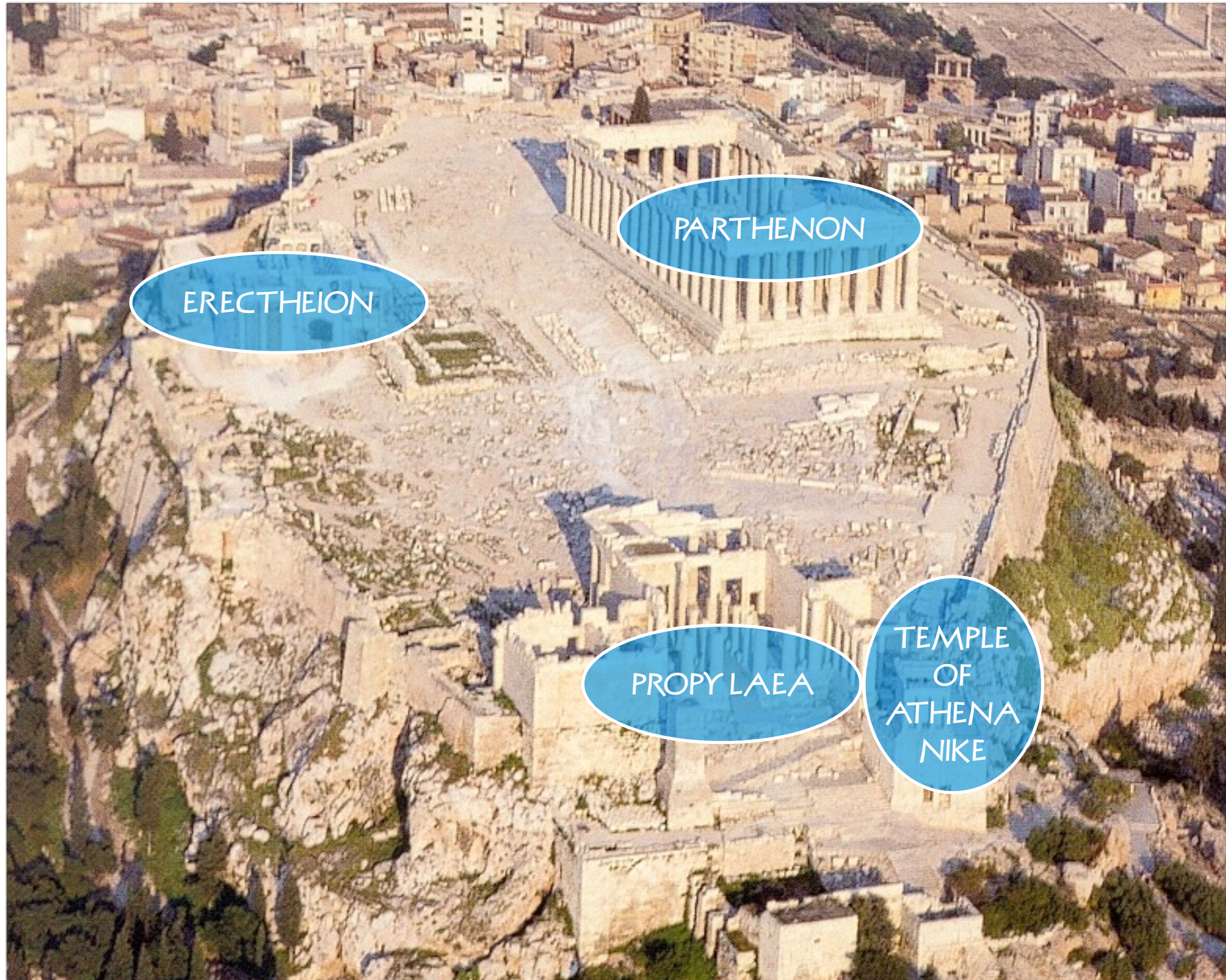


ACRO = HIGH
POLIS = CITY

MANY GREEK CITIES HAD AN ACROPOLIS.

THE ATHENIAN ACROPOLIS WAS
DESTROYED BY THE PERSIANS IN
490 BC.

IT WAS REBUILT UNDER THE RULE
OF PERICLES AS A SYMBOL OF THE
GREEKS VICTORY OVER THE
PERSIANS.

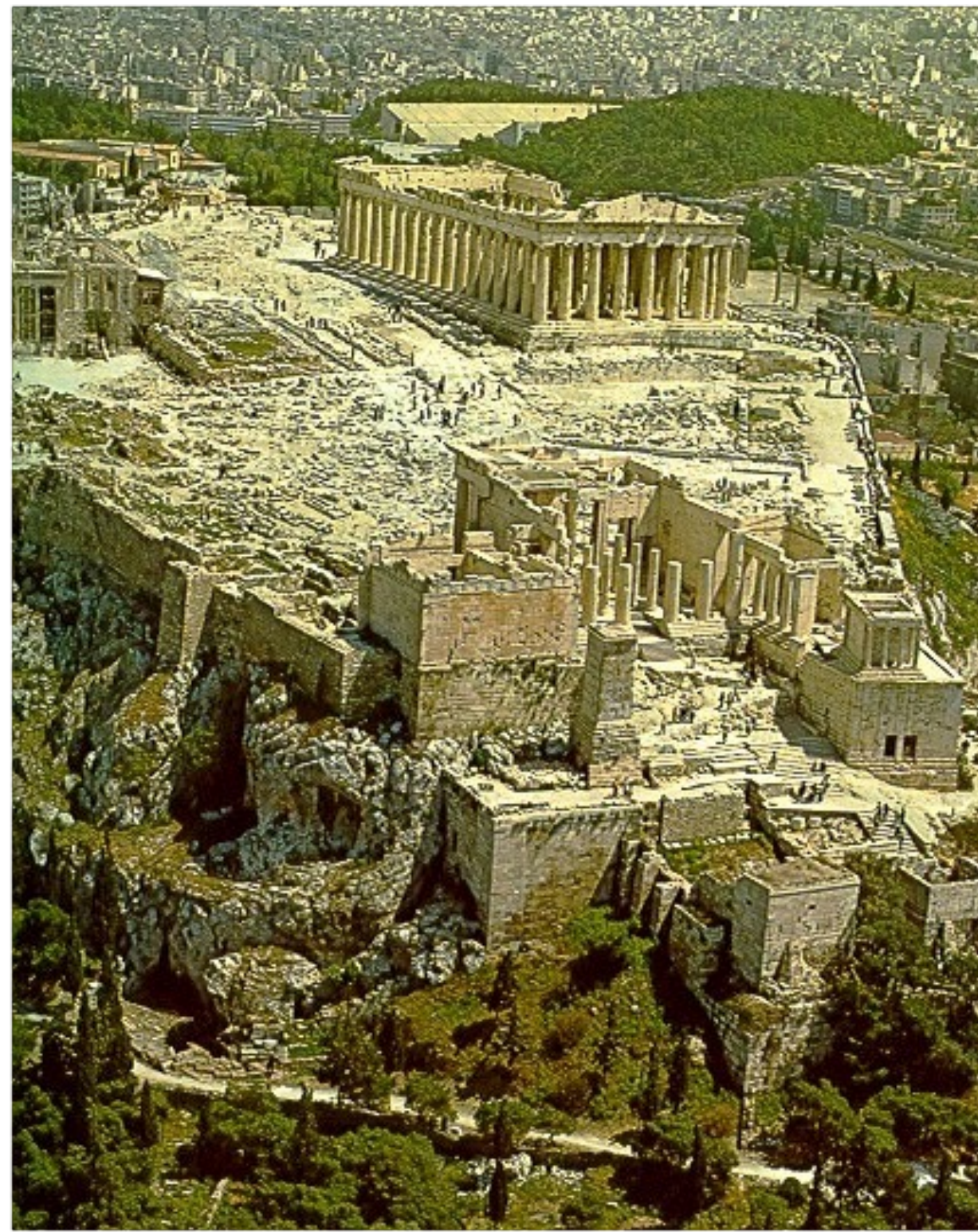


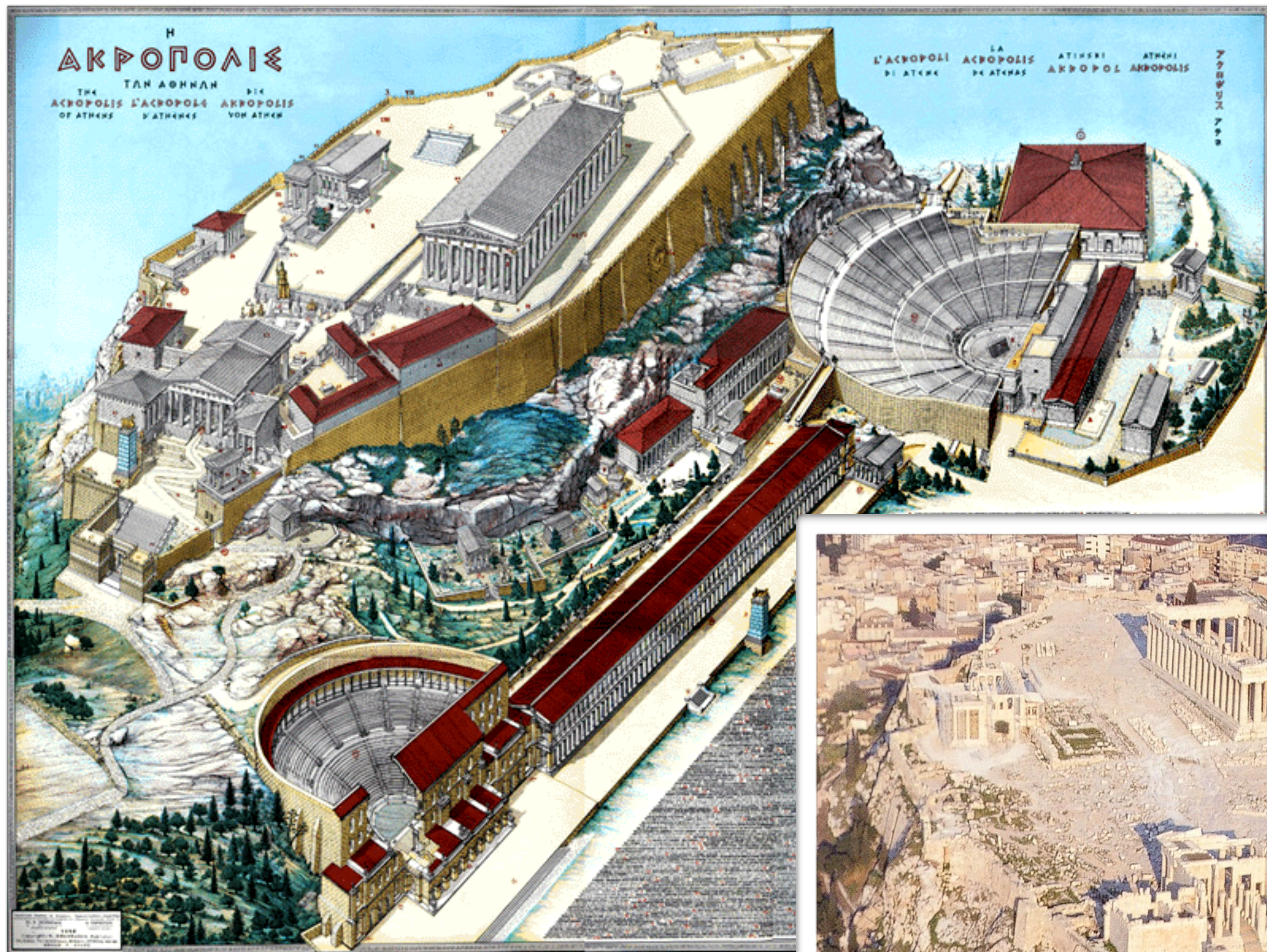
ERECTHEION

PARTHENON

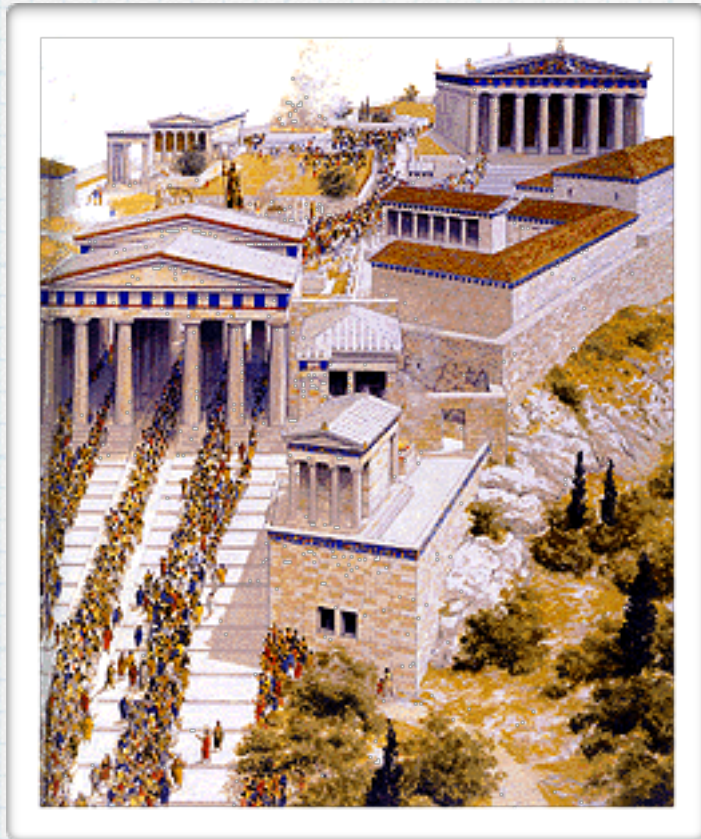
PROPYLAEA

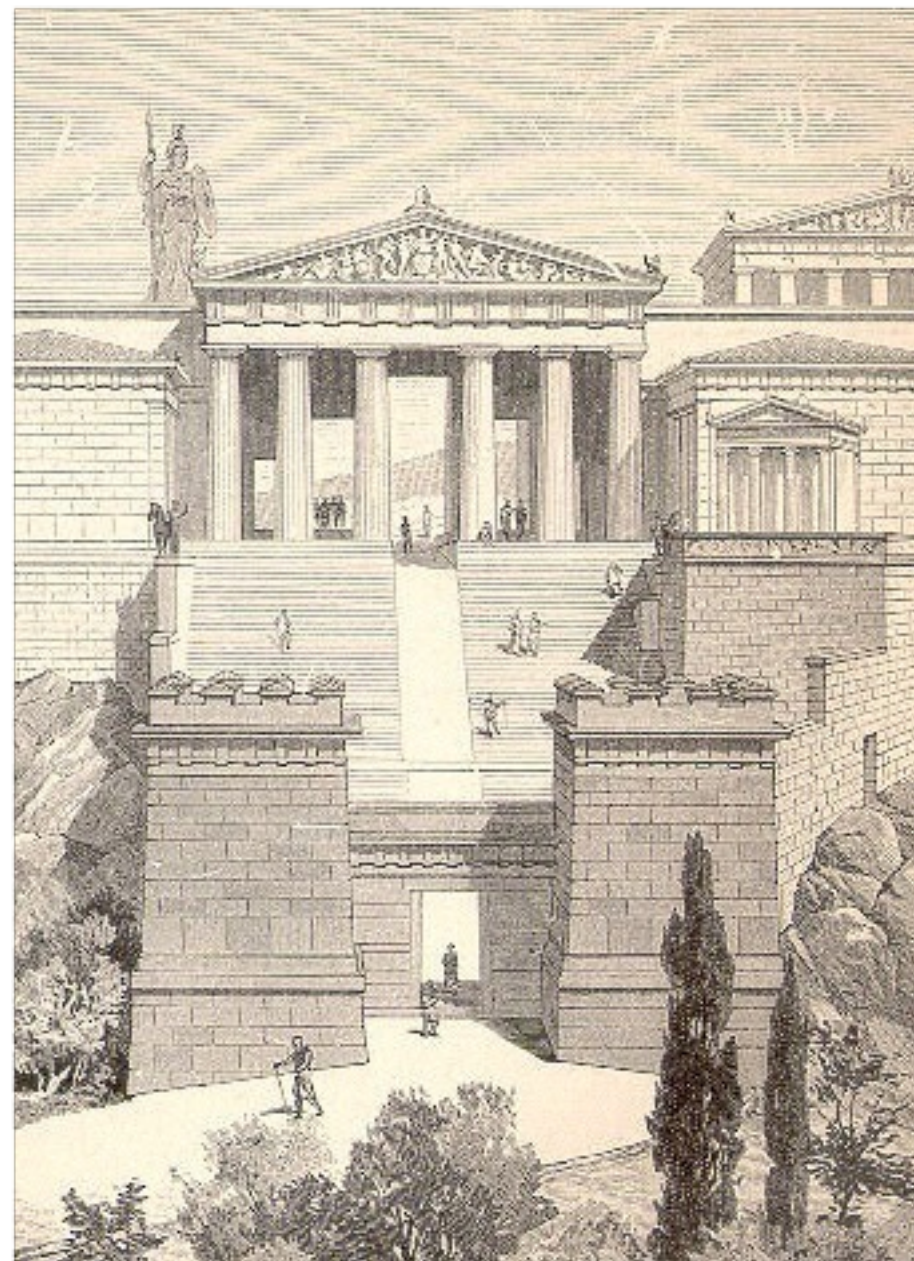
TEMPLE
OF
ATHENA
NIKE





PROPYLAEA

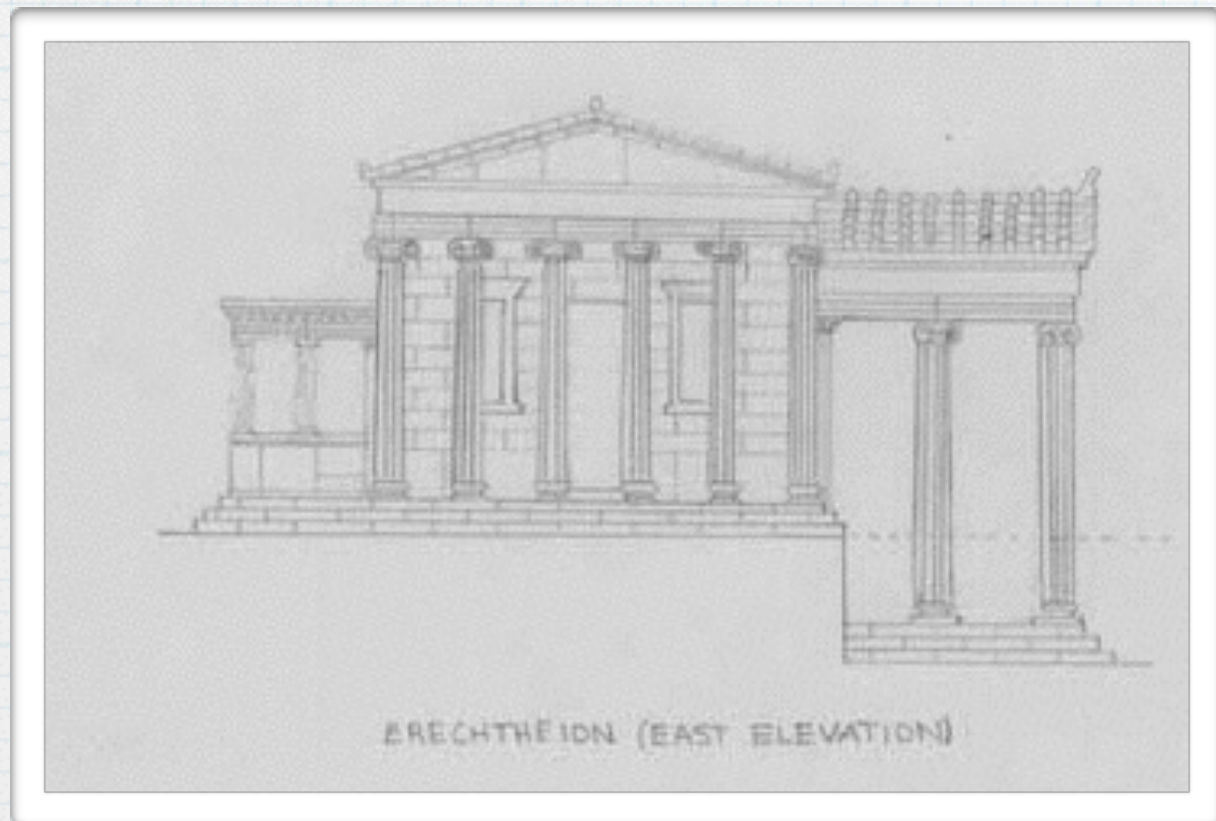






MIXED DORIC & IONIC ORDERS

ERECTHEION



- ASYMMETRICAL "
- HELD SHRINES TO MANY GODS "
- NO CLEAR FRONT "
- ATHENA VS. POSEIDON "
- OLIVE TREE VS. SALT WATER "
- POSEIDON'S TRIDENT MARKS









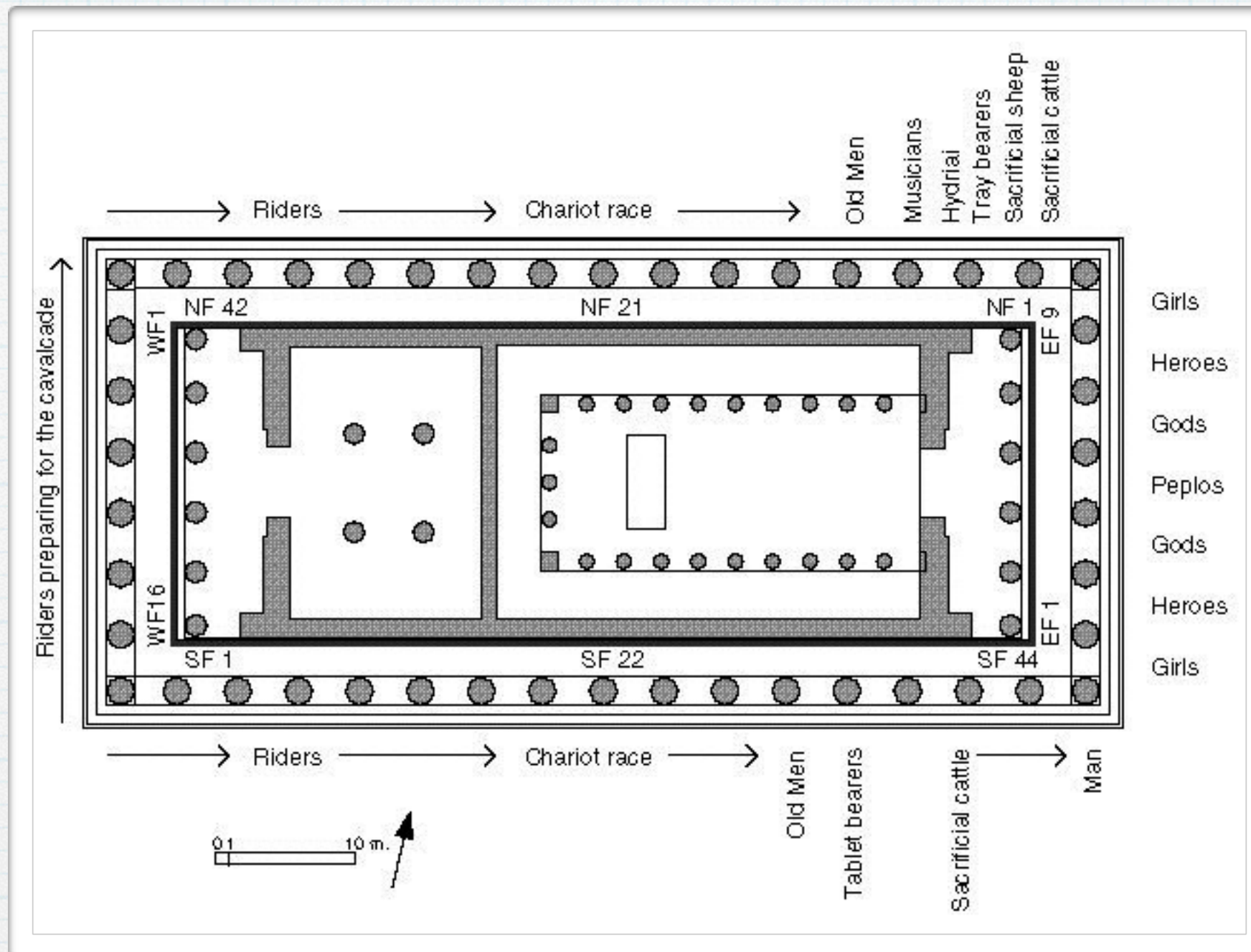


PARTHENON



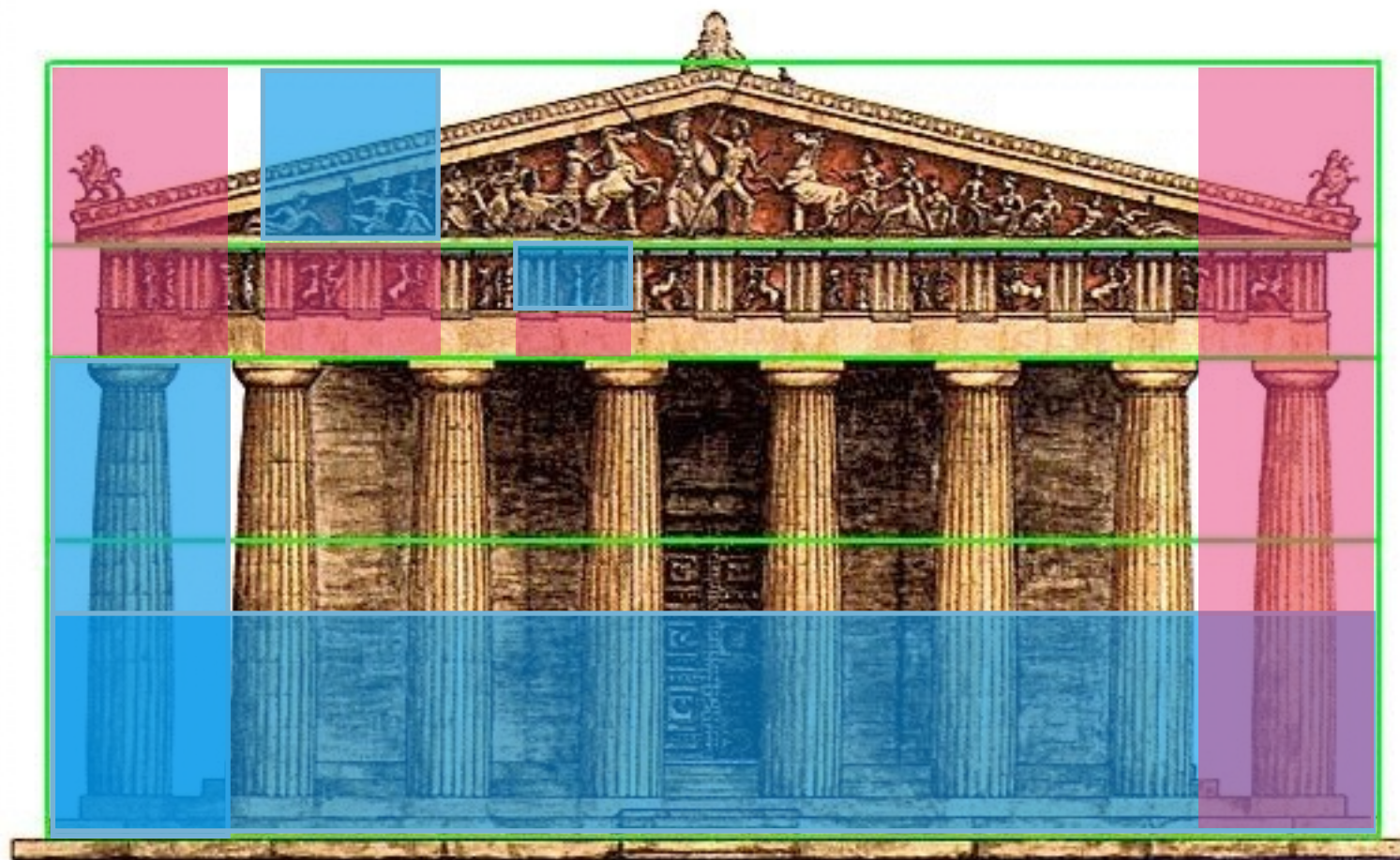
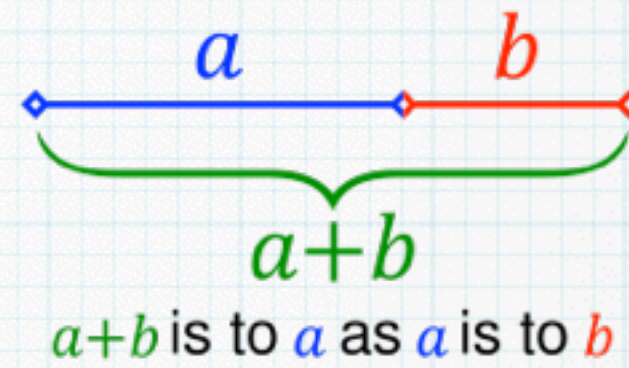
PARTHENOS = MAIDEN / VIRGIN
TEMPLE DEDICATED TO ATHENA THE MAIDEN





8 COLUMNS BY 17 COLUMNS
(2X + 1)

$$\phi = \text{PHI} = 1.618\dots$$



THE PARTHENON

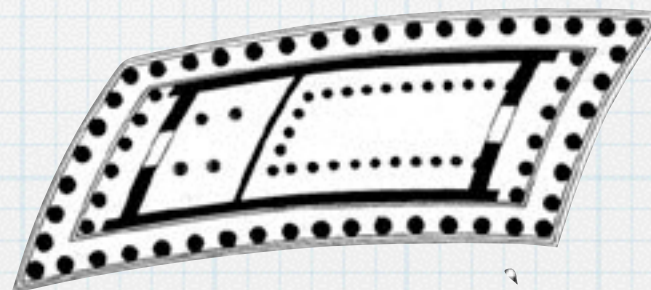
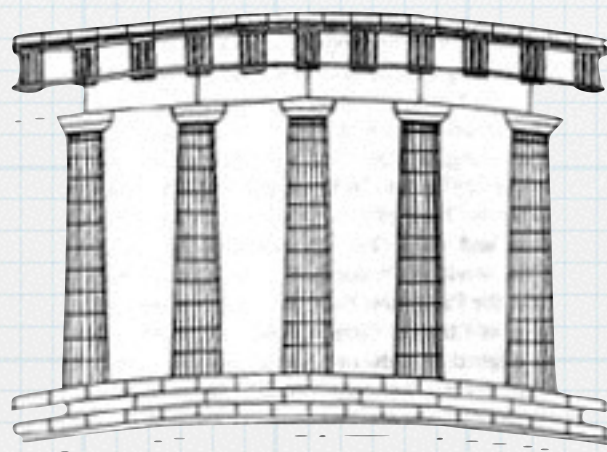
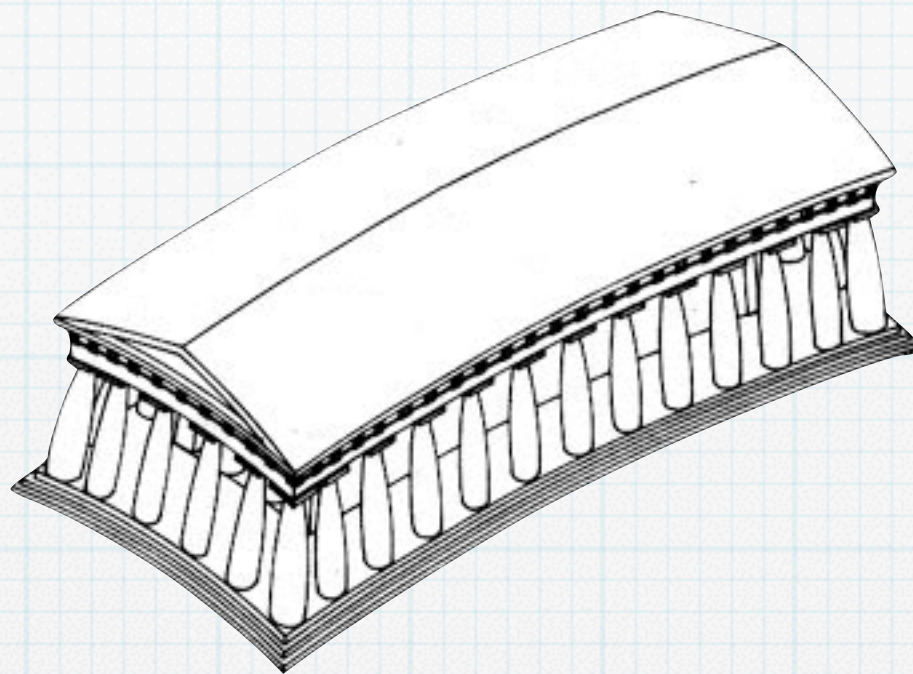
PHI POWDER

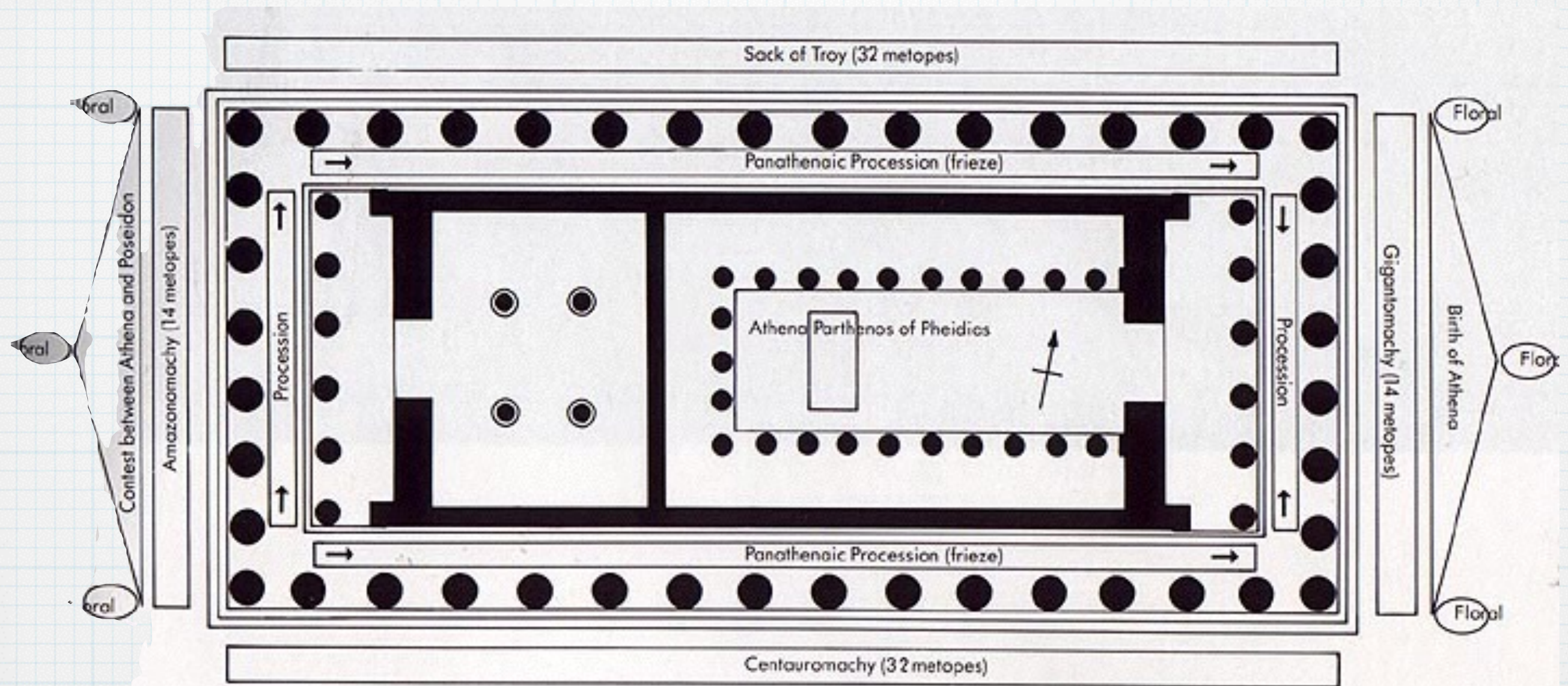






BUILT-IN OPTICAL ILLUSION





EAST PEDIMENT: BIRTH OF ATHENA
 WEST PEDIMENT: ATHENA V. POSEIDON

METOPEs:

NORTH: SACK OF TROY

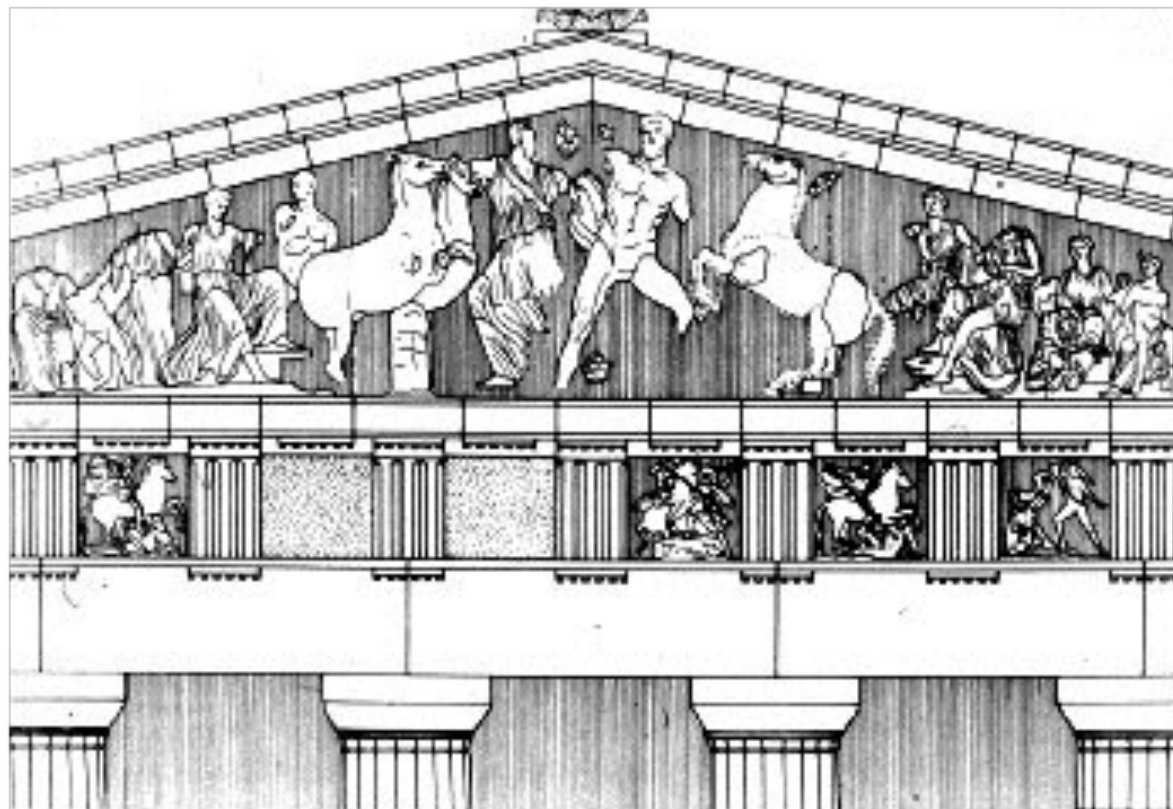
SOUTH: CENTAUROMACHY

EAST: GIGANTOMACHY

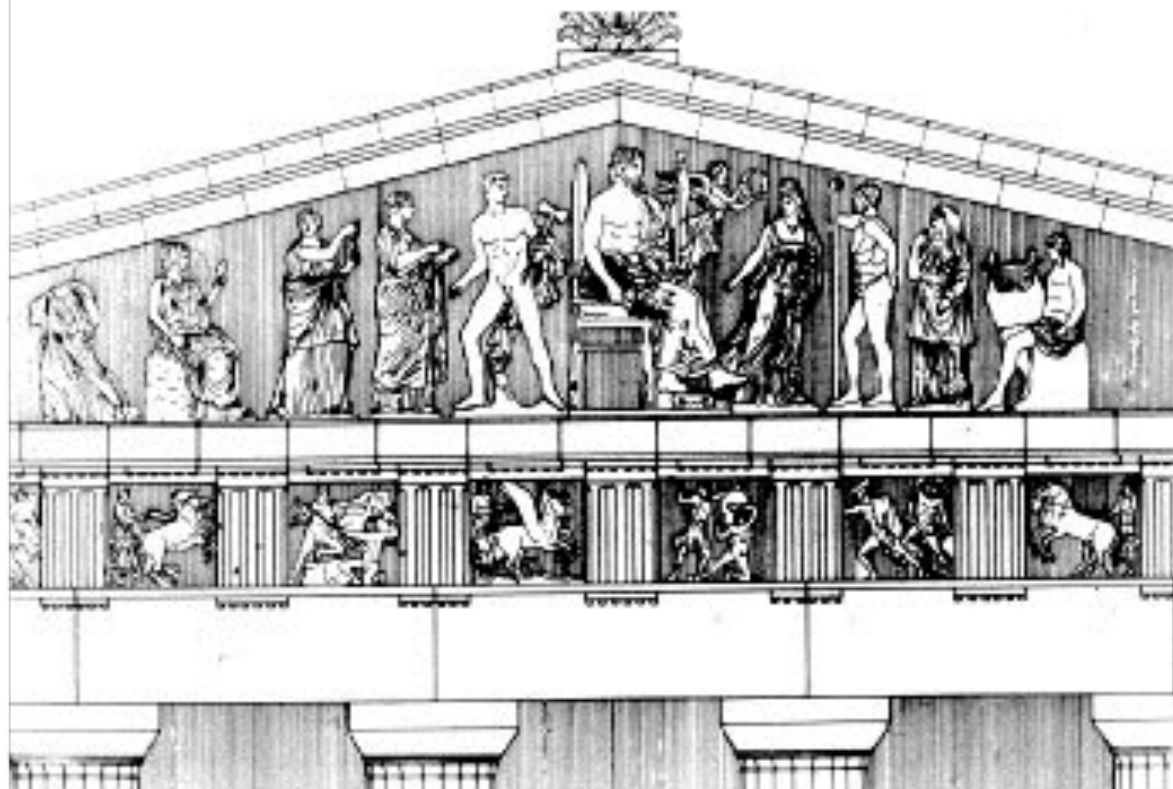
WEST: AMAZONOMACHY

AN INTERNAL FRIEZE DEPICTS THE
 PANATHENIC PROCESSION

MOST OF THESE MARBLE
 SCULPTURES ARE IN THE BRITISH
 MUSEUM IN LONDON AND ARE
 KNOWN COLLECTIVELY AS THE
 ELGIN MARBLES.



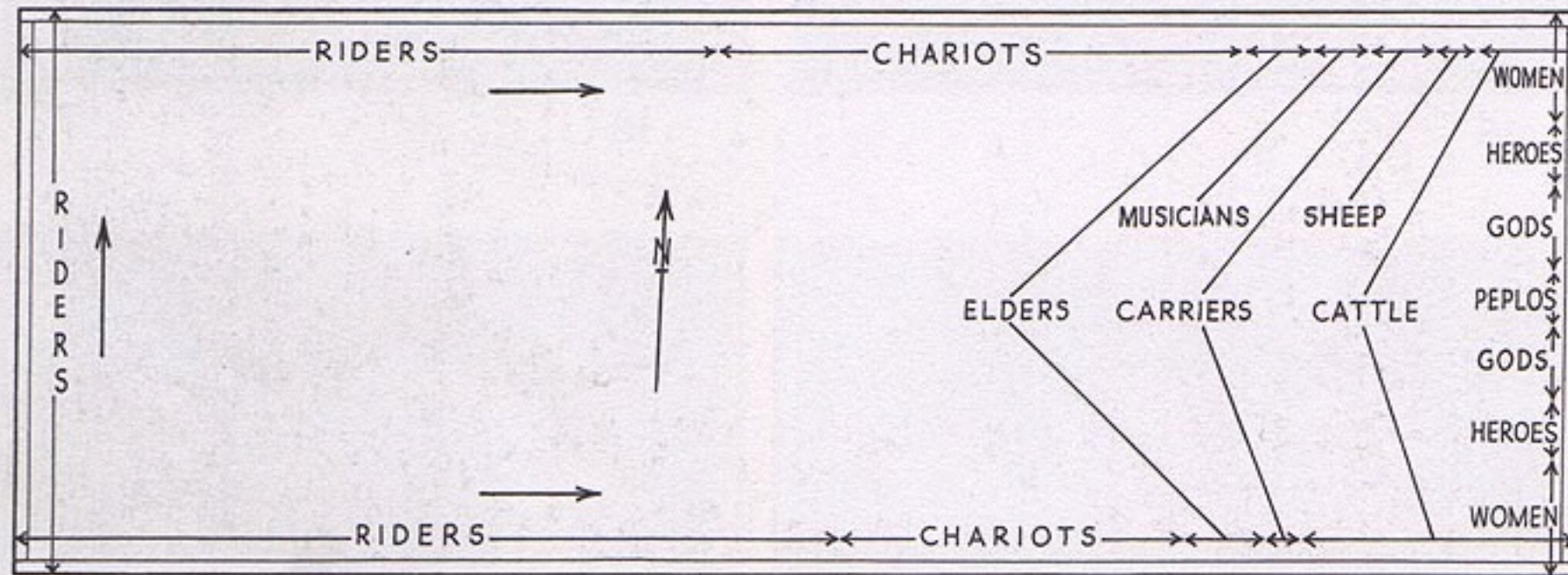
WEST PEDIMENT "
ATHENA V. POSEIDON



EAST PEDIMENT "
BIRTH OF ATHENA



INTERNAL FRIEZE PANATHENIC PROCESSION



Plan of the frieze







METOPÉ

CENTAURUMACHY



STATUE OF ATHENA PARTHENOS



- ◉ MADE OF GOLD & IVORY "
- ◉ 41 FEET TALL "
- ◉ HELD A 6 FOOT TALL STATUE OF NIKE "
- ◉ REPLICIA IN NASHVILLE





TEMPLE OF ATHENA NIKE



