

# EUROPE AFTER ROME



500 – 1000 CE  
ART OF THE WARRIOR LORDS

# MEDIEVAL ART WAS INFLUENCED BY

---

- Christianity
- Greco-Roman Culture
- Non-Roman peoples north of the Alps

# ART OF THE WARRIOR LORDS

---

- Germanic peoples of Northern Europe
- generally small
- decorative adornments
  - size of the artifacts led them to be discounted by many early scholars of the period.
- weapons

# SUTTON HOO

---



- Sutton Hoo is the site of two Anglo-Saxon cemeteries from the 6th and 7th centuries in Suffolk England.
- One contained an undisturbed ship burial that included a wealth of important artifacts.
  - fibulae (shoulder clasps for cloaks)
  - purse lid
  - helmet

# SUTTON HOO FIBULAE



# EXAMPLE OF A FIBULA IN USE



# CLOISONNE

---

- Cloissoné: enamel work in which the different colors are separated by strips of flattened wire placed edgewise on a metal backing.
- *cloisson* is French for “partition”



- four symmetrical images in lower half
- outer two images of a man standing between two beasts
- center images are of eagles attacking ducks
- fit together closely and seems to be one abstract design
- outer two top images are geometric designs of intertwining lines
- center top image is of intertwining lines that become writhing animals



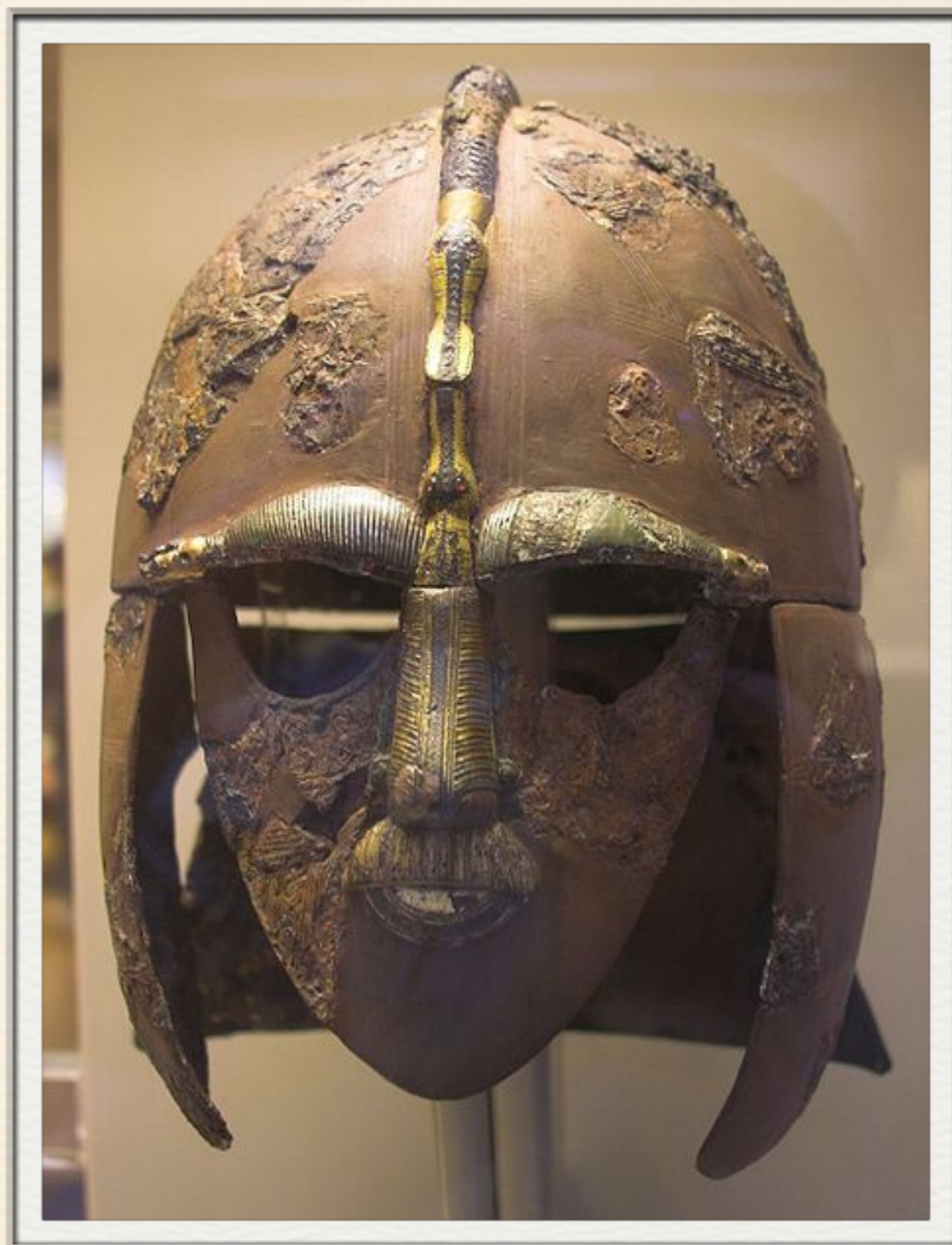
# SUTTON HOO PURSE LID

~~~~~



# SUTTON HOO HELMET

---





# FRANKISH FIBULÆ



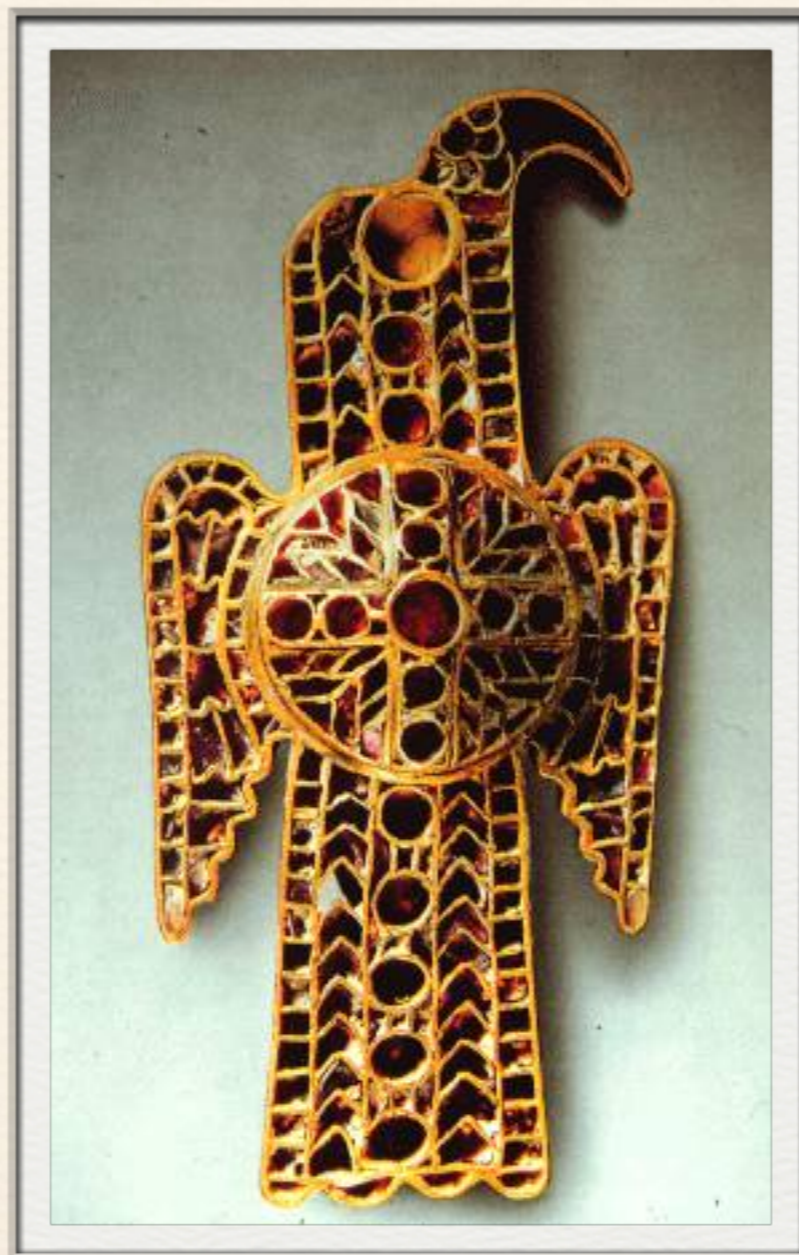
Early 500s



500s

# GOTHIC FIBULA

(FROM THE GOTHES)



circa 500  
Germany

# OSTRAGOTHIC FIBULA

---



circa 500  
Italy

# VIKING SHIP BURIAL

---



Oseberg, Norway  
834 AD

# OSEBERG VIKING SHIP BURIAL



# OSEBERG VIKING BURIAL SHIP

~~~~~



[illegible]

# OSEBERG ANIMAL POST HEAD



# STAVE CHURCH

## URNES, NORWAY

---



circa 1050

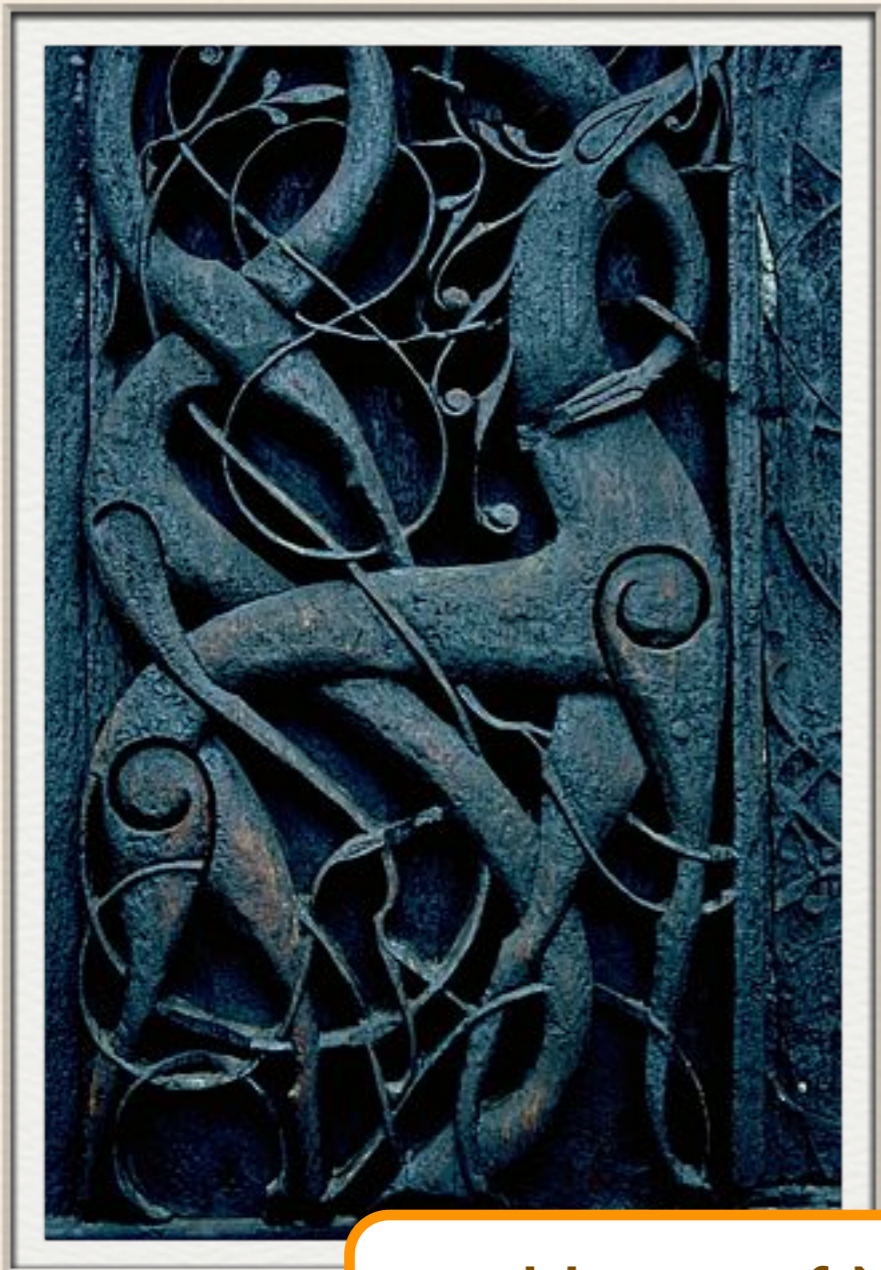
# URNES STAVE CHURCH

---



# URNES STAVE CHURCH

~~~~~



Union of Norse/Viking and Christian Art